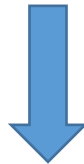


## Cisco CCDA Certification 200-310 Exam



- Vendor: Cisco
- Exam Code: 200-310
- Exam Name: Designing for Cisco Internetwork Solutions

**Get Complete Version Exam 200-310 Dumps with VCE and PDF Here**



<https://www.passleader.com/200-310.html>

**NEW QUESTION 10**

A network design engineer is seeking a dynamic routing protocol that supports fast convergence in a Cisco environment. What protocol allows for this?

- A. EIGRP
- B. OSPF
- C. RIP
- D. BGP
- E. IS-IS

**Answer: A**

**NEW QUESTION 11**

What are two benefits of the bottom-up design approach? (Choose two.)

- A. allows a quick response to a design request
- B. facilitates design that is based on previous experience
- C. requires little or no notation of actual organizational requirements for implementation
- D. incorporates organizational requirements
- E. provides a broader overview to the organization and the designer

**Answer: AB**

**NEW QUESTION 12**

Which network layer is the best fit for security features such as DAI and DHCP snooping?

- A. campus core
- B. enterprise edge
- C. campus distribution
- D. remote-access VPN
- E. enterprise data center
- F. campus access

**Answer: F**

**NEW QUESTION 13**

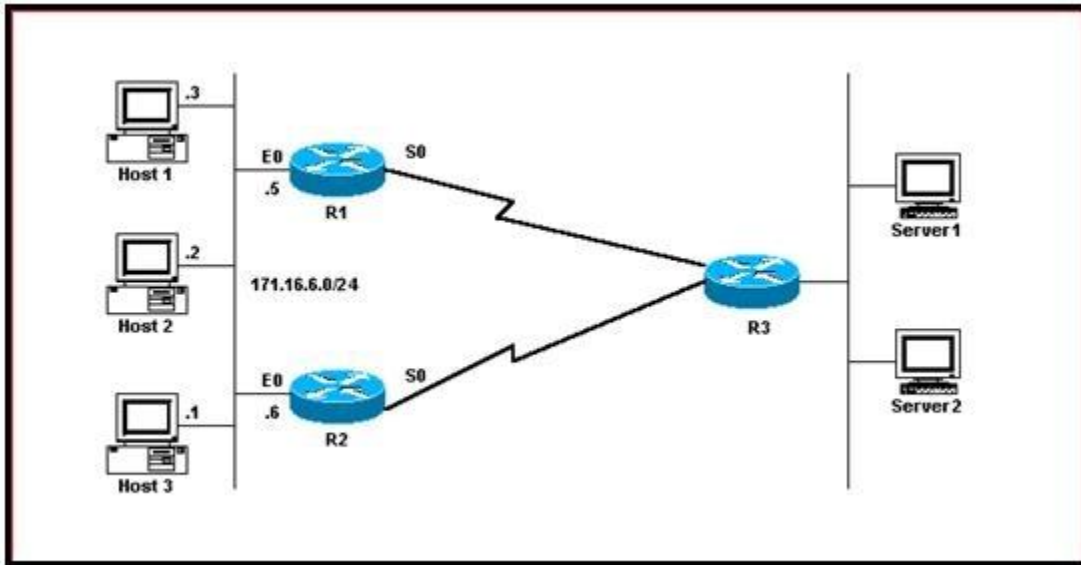
Directory services and electronic messaging are performed at which layer of the network?

- A. core
- B. application
- C. distribution
- D. network

**Answer: B**

**NEW QUESTION 14**

Refer to the exhibit. Which configuration can be used to implement FHRP protocol and load balancing at the same time?



- A. R1  
 Interface Ethernet0  
 ip address 171.16.6.5 255.255.255.0  
 standby 1 preempt  
 standby 1 ip 171.16.6.100  
 standby 1 track Serial0  
 standby 2 preempt  
 standby 2 ip 171.16.6.200  
 standby 2 track serial 0  
 standby 2 priority 95  
 !  
 !  
 R2  
 interface Ethernet0  
 ip address 171.16.6.6 255.255.255.0  
 standby 1 preempt  
 standby 1 ip 171.16.6.100  
 standby 1 track Serial0  
 standby 1 priority 95  
 standby 2 preempt  
 standby 2 ip 171.16.6.200  
 standby 2 track serial 0
- B. R1  
 Interface Ethernet0  
 ip address 171.16.6.5 255.255.255.0  
 standby 1 preempt  
 standby 1 ip 171.16.6.100  
 standby 1 track Serial0  
 standby 1 priority 95  
 !  
 !  
 R2  
 interface Ethernet0  
 ip address 171.16.6.6 255.255.255.0  
 standby 1 preempt

```
standby 1 ip 171.16.6.100
standby 1 track Serial0
standby 1 priority 95
C. R1
Interface Ethernet0
ip address 171.16.6.5 255.255.255.0
standby 1 preempt
standby 1 ip 171.16.6.100
standby 1 track Serial0
standby 1 priority 95
standby 2 preempt
standby 2 ip 171.16.6.200
standby 2 track serial 0
standby 2 priority 95
!
!
R2
interface Ethernet0
ip address 171.16.6.6 255.255.255.0
standby 1 preempt
standby 1 ip 171.16.6.100
standby 1 track Serial0
standby 2 preempt
standby 2 ip 171.16.6.200
standby 2 track serial 0
D. R1
Interface Ethernet0
ip address 171.16.6.5 255.255.255.0
standby 1 preempt
standby 1 ip 171.16.6.100
standby 1 track Serial0
standby 1 priority 95
!
!
R2
interface Ethernet0
ip address 171.16.6.6 255.255.255.0
standby 1 preempt
standby 1 ip 171.16.6.100
```

**Answer: A**

### **NEW QUESTION 15**

Cisco FabricPath brings the benefits of routing protocols to Layer 2 network Ethernet environments. What are two advantages of using Cisco FabricPath technology? (Choose two.)

- A. Cisco FabricPath provides MAC address scalability with conversational learning.
- B. Loop mitigation is provided by the TTL field in the frame.
- C. Cisco FabricPath technology is supported in all Cisco platforms and can replace legacy Ethernet in all campus networks.
- D. Cisco FabricPath relies on OSPF to support Layer 2 forwarding between switches, which allows load balancing between redundant paths.
- E. Cisco FabricPath is IETF-standard and is not used with Cisco products.

**Answer: AB**

**NEW QUESTION 16**

A network design shows two routers that are directly connected to an Ethernet switch using optical connections. There is an OSPF adjacency between the routers. In this design, which solution ensures that interface-down detection is reported as quickly as possible to the IGP?

- A. optimized OSPF SPF timers
- B. Bidirectional Forwarding Detection
- C. automatic protection switching
- D. optimized OSPF LSA timers
- E. Ethernet OAM CFM monitoring

**Answer: B**

**NEW QUESTION 17**

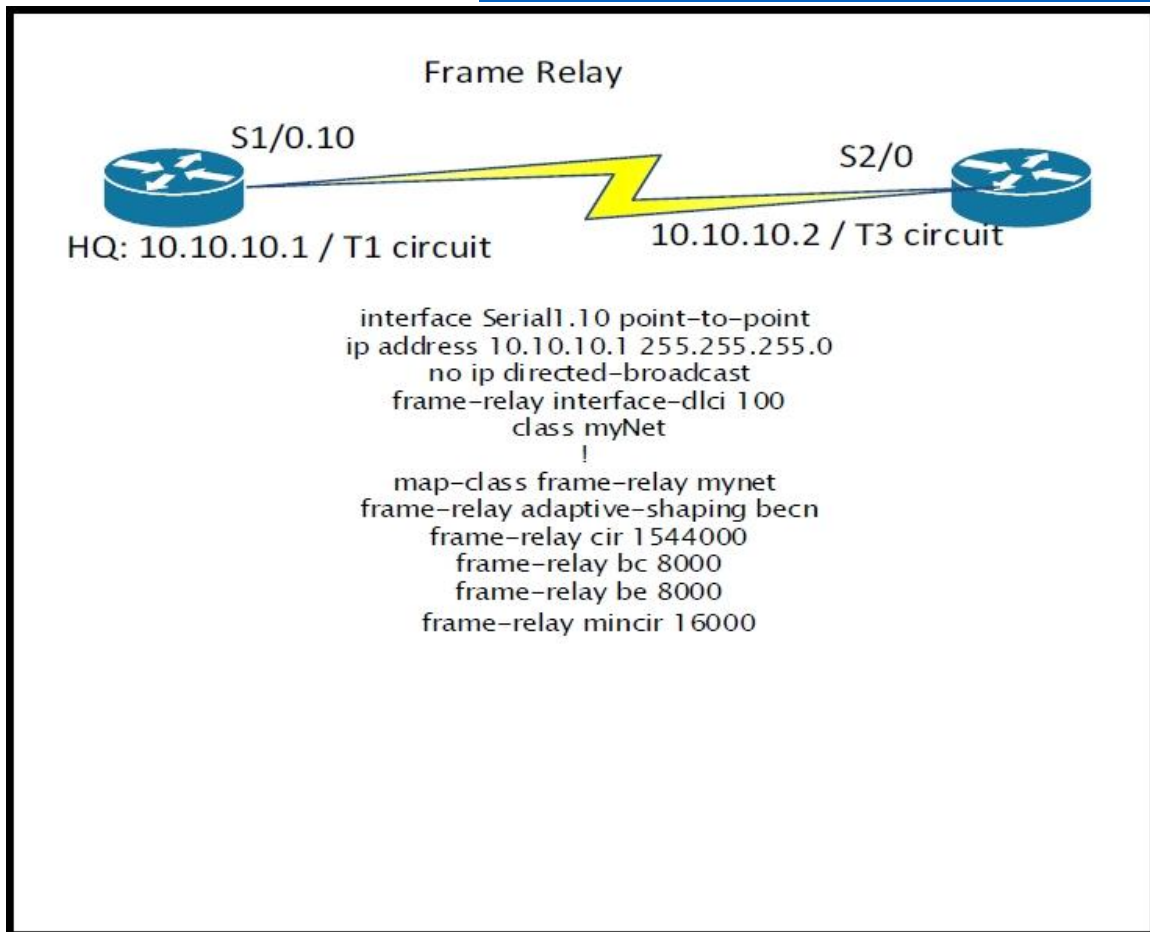
Which statement is true about using a DNS server to discover a controller IP?

- A. The AP sends a discovery request to the first controller on the list and then goes down the list chronologically until it receives a discovery response.
- B. The AP sends a discovery request to the last controller on the list and then goes up the list chronologically until it receives a discovery response.
- C. The AP sends a discovery request to all controllers on the list simultaneously.
- D. Multiple controller IP addresses in a DNS response are not supported.

**Answer: C**

**NEW QUESTION 18**

Refer to the exhibit. A network engineer at a technical call center receives a call from a customer complaining that only 56 kbps of data can be transferred over the T1 Frame Relay WAN circuit at a remote site. The engineer checks the Frame Relay switch and confirms that only 56 kbps is being transferred over the circuit. The engineer requests the router configuration of the customer headquarters site router. What is causing this issue to occur?



- A. The wrong CIR is configured.
- B. The BECN configuration is causing this issue.
- C. The class name is spelled wrong under the interface.
- D. The wrong DLCI number is assigned to the interface.

**Answer: C**

**NEW QUESTION 19**

Which option is an advanced congestion management mechanism?

- A. weighted fair queuing
- B. policing
- C. payload compression
- D. header compression

**Answer: A**

**NEW QUESTION 20**

Which option is an example of physical device virtualization?

- A. VSS
- B. VPN

- C. VRF
- D. VLAN

**Answer: A**

**NEW QUESTION 21**

A data center is being deployed, and one design requirement is to be able to readily scale server virtualization. Which IETF standard technology can provide this requirement?

- A. Transparent Interconnection of Lots of Links
- B. Cisco FabricPath
- C. data center bridging
- D. Cisco Unified Fabric

**Answer: A**

**NEW QUESTION 22**

A company would like to distribute a VM hosting cluster between three data centers with the capability to move VMs between sites. The connectivity between data centers is IP only, and the new design should use the existing WAN. Which Layer 2 tunneling technology should be used?

- A. VPLS
- B. L2TPv3
- C. OTV
- D. AToM

**Answer: C**

**NEW QUESTION 23**

In which two places is redundancy recommended in an enterprise campus network design? (Choose two.)

- A. building distribution
- B. campus core
- C. building access
- D. e-commerce
- E. Internet connectivity

**Answer: AB**

**NEW QUESTION 24**

What are two purposes of route redundancy? (Choose two.)

- A. minimize the effect of link failures
- B. minimize the effect of internetworking device failures
- C. minimize the convergence time of STP
- D. load balance across redundant paths
- E. save network costs

**Answer: AB**

**NEW QUESTION 25**

Which two statements are true regarding a hierarchical network? (Choose two.)

- A. facilitates choosing the type of routing protocols to be used in the network
- B. provides scalability without affecting other layers and functionality
- C. provides better performance as network resources are efficiently utilized
- D. limits redundancy at the distribution layer
- E. complicates manageability because of the added security

**Answer: BC**

**NEW QUESTION 26**

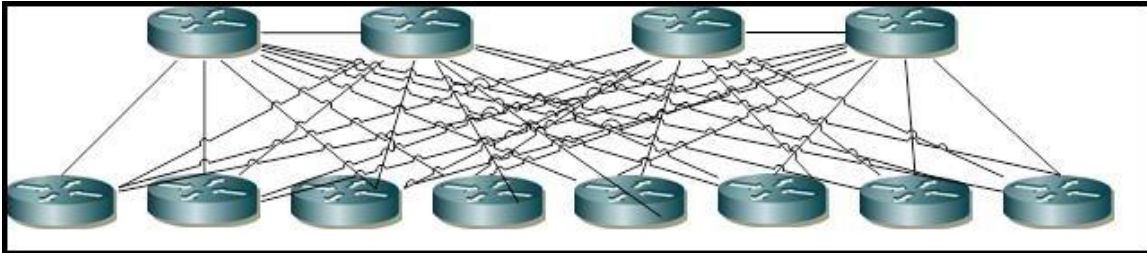
Which two Cisco data center devices can participate in Cisco FabricPath? (Choose two.)

- A. Cisco Nexus 5500 Series Switches
- B. Cisco Nexus 1000V Series Switches
- C. Cisco Nexus 7000 Series Switches
- D. Cisco Nexus 4900 Series Switches
- E. Cisco MDS 9500 Series Multilayer Directors

**Answer: AC**

**NEW QUESTION 27**

Refer to the exhibit. Assuming that a network will grow exponentially for the next 24 months, what is the main limitation that must be addressed?



- A. scalability
- B. serviceability
- C. redundancy
- D. resiliency

**Answer: A**

**NEW QUESTION 28**

A network engineer is tasked with summarizing the routes to a remote site. What is the optimal route statement to connect to the 192.168.101.0/24 and 192.168.102.0/24 networks across the corporate WAN?

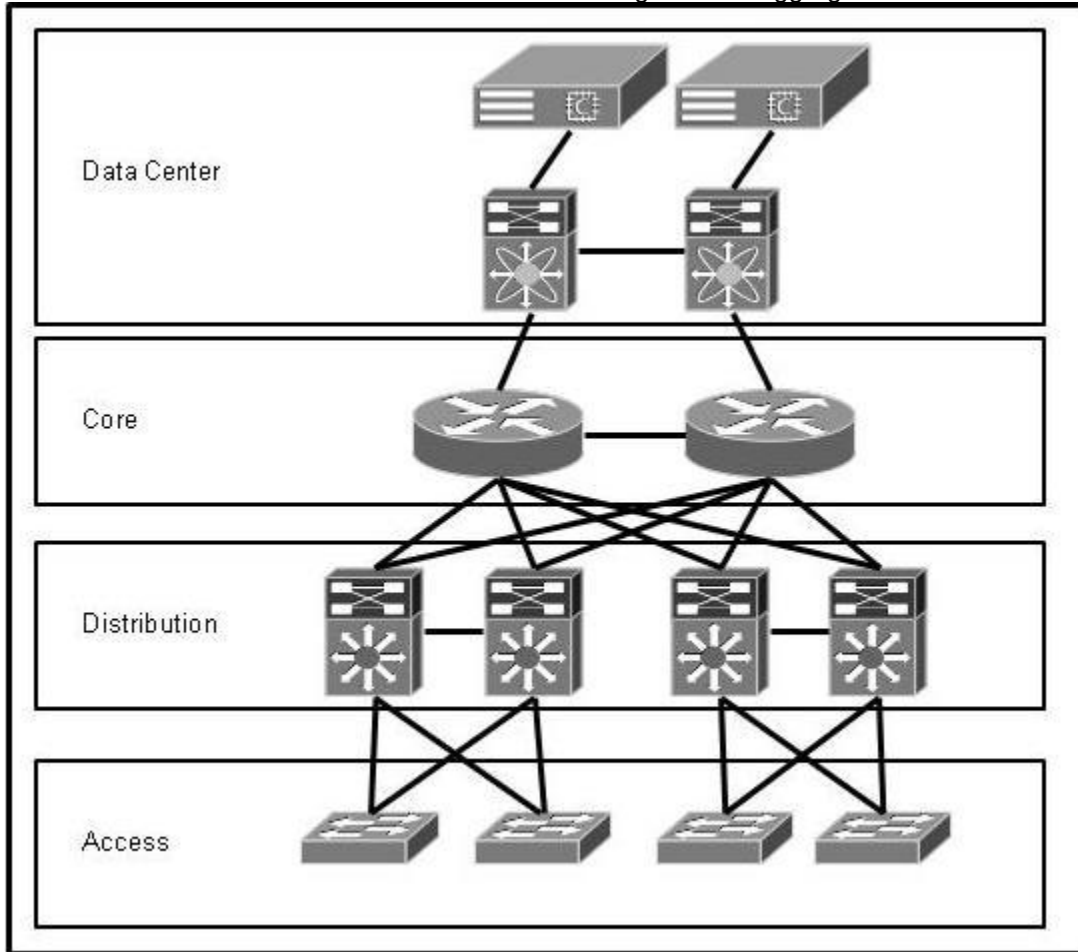
- A. ip route 192.168.100.0 255.255.254.0 10.1.1.1
- B. ip route 192.168.100.0 255.255.252.0 10.1.1.1
- C. ip route 192.168.100.0 255.255.255.0 10.1.1.1
- D. ip route 192.168.101.0 255.255.254.0 10.1.1.1

**Answer: B**



**NEW QUESTION 29**

Refer to the exhibit. Where should routes in the routing table be aggregated or summarized?



- A. in the core toward the data center
- B. in the distribution toward the access
- C. in the core toward the distribution
- D. in the distribution toward the core

**Answer: D**

**NEW QUESTION 30**

Which option is used by OSPF to reduce the flooding domain of database updates in a network?

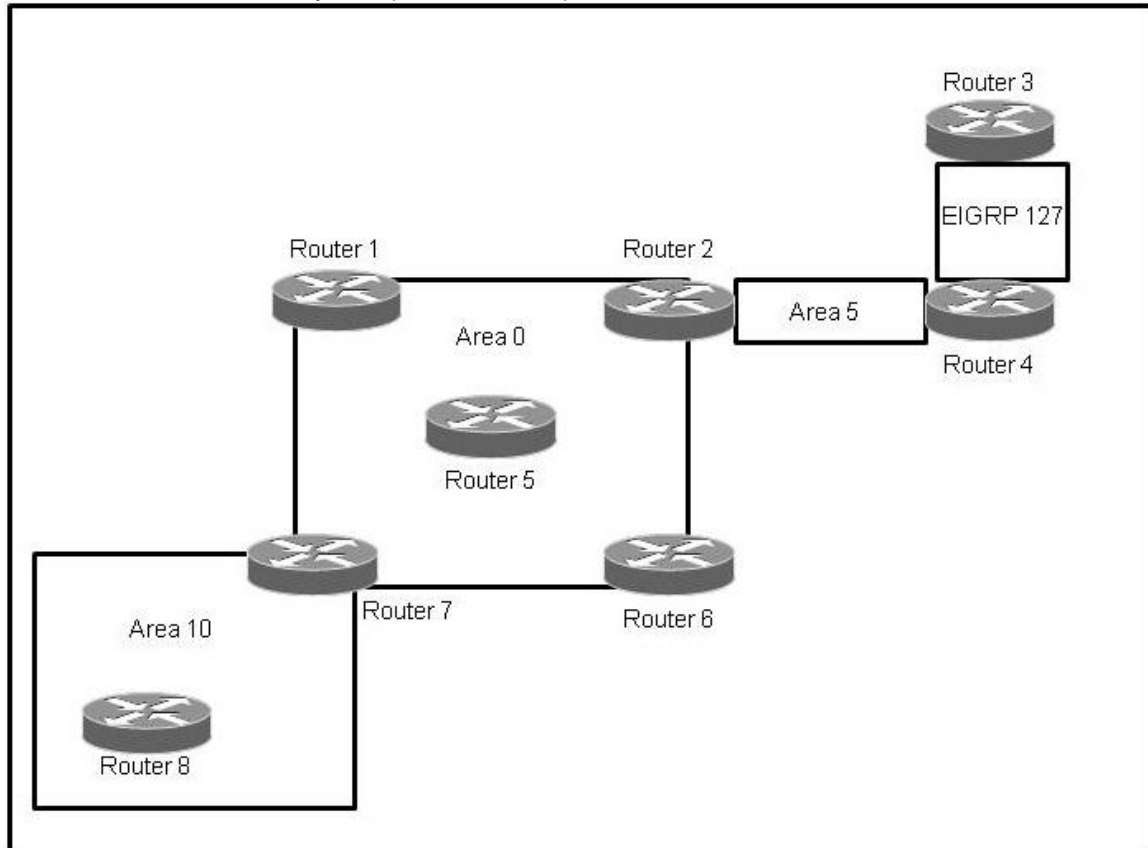
- A. hello packets
- B. virtual links
- C. interface cost
- D. areas

**Answer: D**

**NEW QUESTION 31**

Refer to the exhibit. Which three OSPF routers are the only routers that may perform summarization

with the current network layout? (Choose three.)



- A. Router 2
- B. Router 3
- C. Router 4
- D. Router 5
- E. Router 7
- F. Router 8

**Answer: ACE**

**NEW QUESTION 32**

Which two options should be used to achieve fast convergence in an OSPF network? (Choose two.)

- A. Bidirectional Forwarding Detection
- B. fast hellos
- C. LSA retransmission interval
- D. SPF throttle timers
- E. LSA group pacing

**Answer: AB**

**NEW QUESTION 33**

Refer to the exhibit. Which next hop will the router select if given an IP packet with the destination address 19.48.254.3?

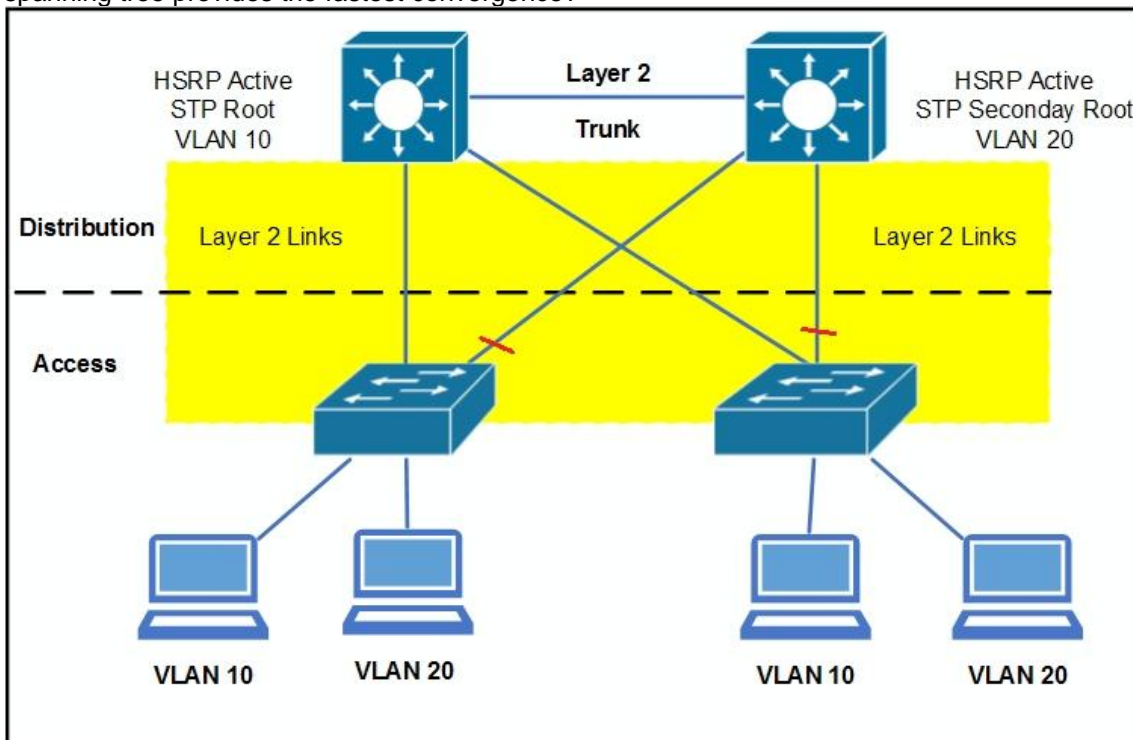
Address/Mask	Next hop
19.46.0.0/16	Interface 0
19.47.0.0/16	Interface 1
19.52.43.0/24	Router 1
default	Router 2

- A. Router 2
- B. Router 1
- C. Interface 0
- D. Interface 1

**Answer: A**

**NEW QUESTION 34**

Refer to the exhibit. In this suboptimal design of a homogeneous Cisco network, which version of spanning tree provides the fastest convergence?



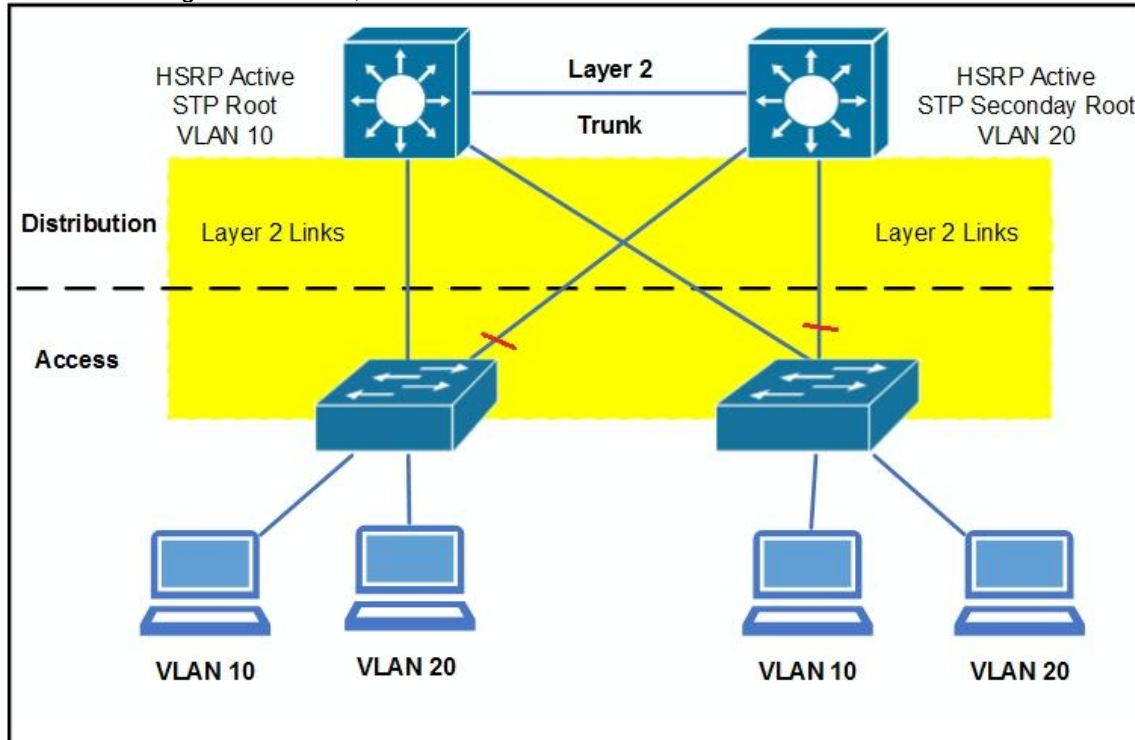
- A. PVST+
- B. CST
- C. RPVST
- D. VSTP

E. PVST

**Answer: C**

**NEW QUESTION 35**

Refer to the exhibit. The red lines refer to STP blocked ports. What happens if the HSRP active moves to the right distribution, and the STP root remains on the left distribution?

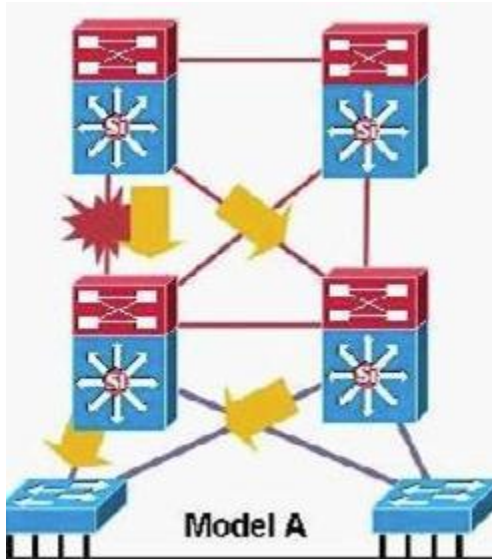


- A. The STP root becomes the gateway.
- B. The interdistribution link is used for transit.
- C. The HSRP standby becomes the gateway.
- D. The interaccess link is used for transit.
- E. Host traffic is unable to reach the HSRP active.

**Answer: B**

**NEW QUESTION 36**

Refer to the exhibit. The organization is migrating away from FHRP. VSS has been implemented on a pair of Cisco Catalyst 6500 Series Switches. In order to avoid changes to end hosts, the default gateway is carried over to the SVI on the VSS. Why does the implementation plan require a four-hour wait after removing the FHRP configuration?



- A. The VLAN interface MAC address and the FHRP MAC address are different. It takes four hours for the VLAN interface to come up.
- B. The SVI IP address and the FHRP IP address are different. It takes four hours for the SVI to come up.
- C. The VLAN interface MAC address and the FHRP MAC address are different. It takes four hours for the ARP cache to time out.
- D. The VLAN interface IP address and the FHRP IP address are different. It takes four hours for the VLAN interface to come up.
- E. The VLAN interface IP address and the FHRP IP address are different. It takes four hours for the ARP cache to time out.

**Answer: C**

**NEW QUESTION 37**

Which command is correct for creating a virtual interface on a Cisco wireless controller?

- A. config create interface
- B. tag interface
- C. config interface address
- D. untag interface

**Answer: C**

**NEW QUESTION 38**

Which three series of Cisco wireless controllers support wireless Bidirectional Rate Limiting? (Choose three.)

- A. Cisco 2500 Series Wireless Controllers
- B. Cisco 5500 Series Wireless Controllers
- C. Cisco 5700 Series Wireless Controllers
- D. Cisco 7500 Series Wireless Controllers
- E. Cisco 8500 Series Wireless Controllers
- F. Cisco 7200 Series Wireless Controllers

**Answer: BDE**

**NEW QUESTION 39**

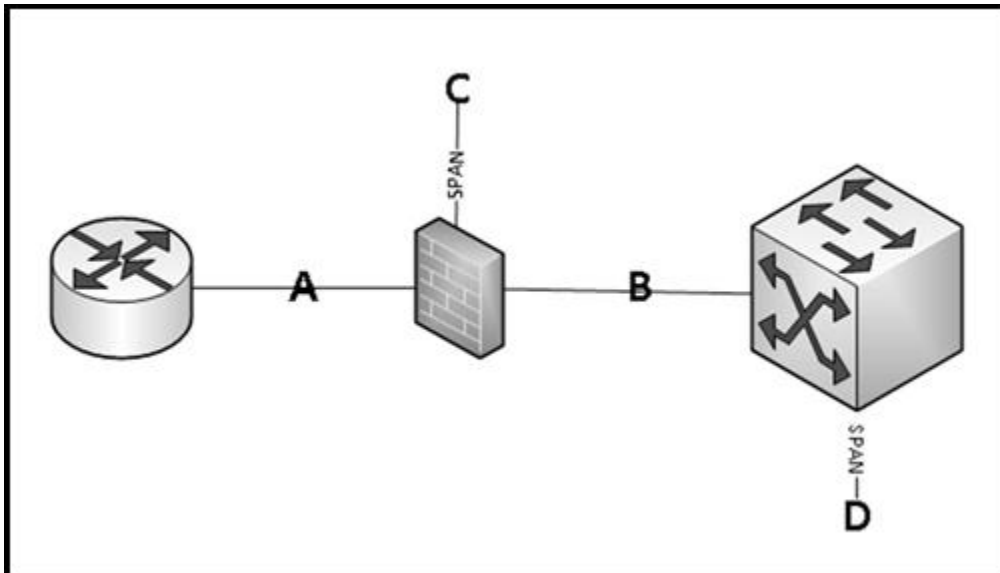
Which option can use deep-packet examination to determine the specific nature of an attack?

- A. network IPS
- B. NetFlow collector
- C. stateful firewall
- D. syslog server

**Answer: A**

**NEW QUESTION 40**

Refer to the exhibit. Which location is best for placing a monitor-only IPS that has visibility into the most data center traffic?



- A. inline before the firewall
- B. inline after the firewall
- C. passive off the firewall
- D. passive off the internal switch

**Answer: D**

**NEW QUESTION 41**

Which Cisco technology can connect more than two switches so that they behave as one switch?

- A. Etherchannel
- B. Trunking
- C. VSS
- D. Stackwise

**Answer: D**

**NEW QUESTION 42**

Which two processes are included in the Build phase of the Cisco Design Life Cycle? (Choose two.)

- A. Design
- B. Validation
- C. Analysis
- D. Deployment
- E. Assessment

**Answer: BD**

**NEW QUESTION 43**

Which statement about modular network design is true?

- A. It is complex and should be used only in specialized situations
- B. Each deployed module is identical to the others, simplifying configuration
- C. It is flexible architecture that simplifies design, management and troubleshooting
- D. Each module includes access, distribution and core layers

**Answer: C**

**NEW QUESTION 44**

When designing changes to an existing network, which two options are documented to understand environmental constraint? (Choose two.)

- A. Utilization of network resources
- B. Floor and rack space availability
- C. Host naming conventions
- D. Heating and Air conditioning
- E. Location of existing documentation

**Answer: BD**

**NEW QUESTION 45**

In the traditional hierarchical LAN design, which two statements about the distribution layer are true? (Choose two.)

- A. It typically is connected directly to the internet. It provides users direct access to the network.
- B. It uses Layer 2 switching only.
- C. It aggregates data from the access layer.
- D. Policy is implemented at this layer.

**Answer: D**

**NEW QUESTION 46**

Which level needs to be set on Cisco WLC for VoIP traffic?

- A. PLATINUM
- B. GOLD
- C. SILVER
- D. BRONZE

**Answer: A**

**NEW QUESTION 47**

Choose considerations for access layer design? (Choose two.)

- A. QOS
- B. Routing
- C. Port security
- D. Load balance
- E. HSRP

**Answer: AC**

**NEW QUESTION 48**

For a VLAN that requires 60 hosts, which subnet is the most efficient?

- A. 10.0.0.1/20
- B. 172.31.17.0/27
- C. 10.10.10.0/26
- D. 192.168.15.0/24

**Answer: C**

**NEW QUESTION 49**

Which option is an advantage of a Layer 3 access model over the traditional Layer 2 access model?

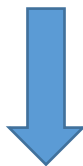
- A. Increased neighbor adjacencies
- B. Faster convergence
- C. Reduced resources on the router
- D. Reduced size of routing table

**Answer: B**

**NEW QUESTION 50**

.....

**Get Complete Version Exam 200-310 Dumps with VCE and PDF Here**



<https://www.passleader.com/200-310.html>