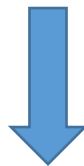


Cisco CCDE Certification 352-001 Exam



- Vendor: Cisco
- Exam Code: 352-001
- Exam Name: CCDE Written Exam

Get Complete Version Exam 352-001 Dumps with VCE and PDF Here



<https://www.passleader.com/352-001.html>

NEW QUESTION 109

Which three options are important functions of IPv6 first-hop security? (Choose three.)

- A. implements a broadcast-control mechanism
- B. limits IPv6 route advertisement in the network
- C. suppresses excessive multicast neighbor discovery
- D. prevents IPv6 packet fragmentation
- E. prevents rogue DHCP servers from assigning IPv6 addresses

Answer: BCE

NEW QUESTION 110

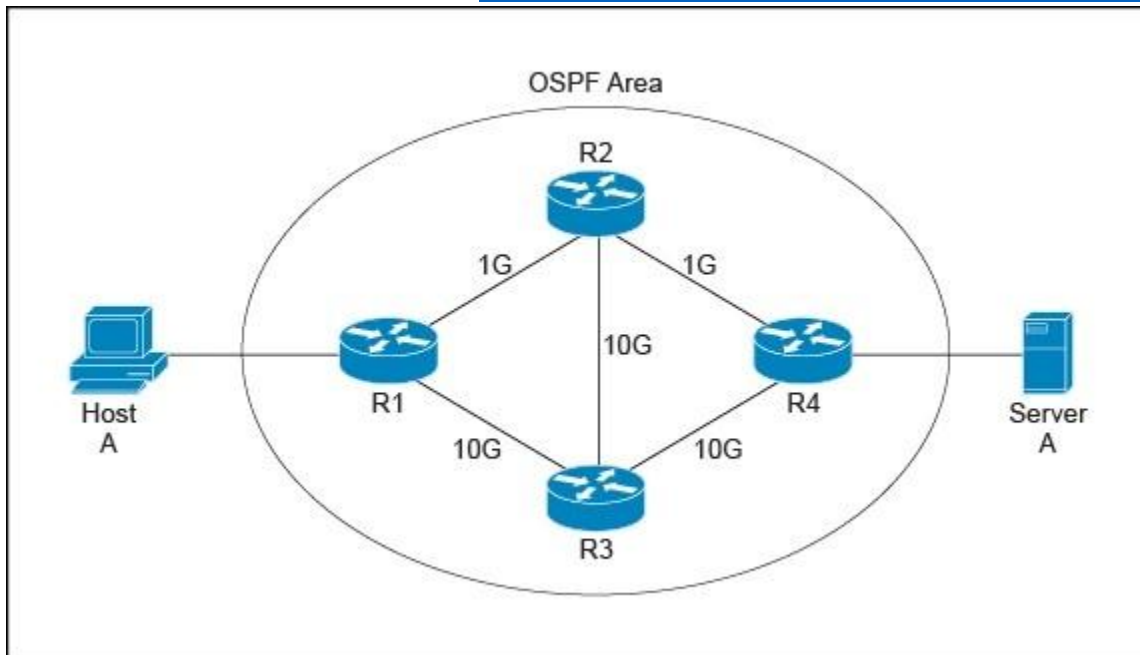
A customer is running OSPF on a broadcast network type in a DMVPN single-hub, single-cloud topology and dynamically routes from the data center to the branch networks. The customer wants to speed up convergence and to avoid having to elect DRs by changing the network type to point-to-multipoint at the data center and to point-to-point at the branches. Which option will meet the fast convergence requirement and not break any OSPF neighbor adjacencies when this redesign is implemented?

- A. The OSPF area containing the branch office routers should be set to stubby.
- B. The OSPF neighbors should be set manually at the data center router.
- C. The OSPF hello and dead timers should be adjusted at the data center router to match the timers at the remote sites.
- D. The OSPF database should be cleared manually for the new network types to take effect.
- E. The interface MTU sizes should be increased on all routers.

Answer: C

NEW QUESTION 111

Refer to the exhibit. After this new OSPF design with per-packet load balancing was implemented, Host A reported that large file downloads from Server A became slow and sometimes failed. The operations team discovered that packets are arriving out of order on R1. Which cost-conscious redesign action will fix the issue?



- A. Upgrade all links to 10 Gb/s.
- B. Adjust MTU sizes to 1500 on all interfaces.
- C. Adjust the OSPF auto-cost reference bandwidth on R4.
- D. Adjust the OSPF auto-cost reference bandwidth on all routers.

Answer: D

NEW QUESTION 112

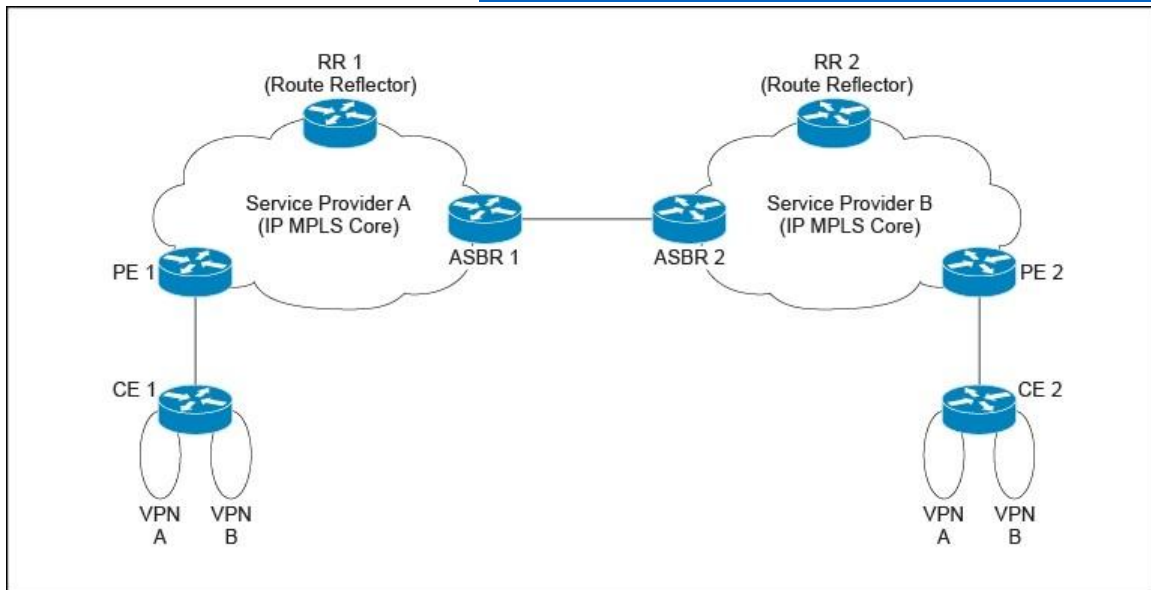
On a large enterprise security solution, which two options are IDS or IPS modes of operation? (Choose two.)

- A. transparent mode
- B. promiscuous mode
- C. traffic discovery mode
- D. routed mode
- E. inline mode

Answer: BE

NEW QUESTION 113

Refer to the exhibit. Service Provider A has offered to help Service Provider B to provide local connectivity for a customer who has a business operation in North America and recently opened an office in Asia. The service to be offered for the customer is a Layer 3 MPLS VPN. Service Provider A and Service Provider B have never shared any business dealings or interconnected their networks. What is the most secure and easiest way for the two service providers to interconnect?



- A. carrier supporting carrier
- B. eBGP VPNv4 multihop between route reflectors
- C. back-to-back VRF
- D. VPNv4 peering between ASBRs

Answer: C

NEW QUESTION 114

A large retail bank is designing a unified communications solution to be deployed to its 200 branches. Its current network traffic consists of a web-based portal, Internet browsing, and general file server access. Each branch has between 15 and 20 users. The current WAN is based on Layer 3 MPLS and the customer manages its own CE routers. The WAN circuit interface to the service provider is Gigabit Ethernet, although the MPLS service that is contracted from the service provider is 10 Mb/s. The design is to use a DSCP-based four-class QoS policy to manage traffic demands. From the options below, which two QoS design options that should be implemented on the customer side will meet the requirement? (Choose two.)

- A. Shape traffic to 10 Mb/s on the CE router.
- B. Police traffic to drop outbound traffic that exceeds 10 Mb/s.
- C. Classify DSCP value EF for call signaling and voice packets, and place traffic in a strict priority queue.
- D. Priority queue traffic to demand up to 80% of total bandwidth.
- E. Enable DSCP-based WRED on all AF classes.

Answer: AE

NEW QUESTION 115

What is the definition of the FCAPS framework?

- A. an ISO framework that establishes a model for network management and contains guidelines for managing objects, the management database, and the application entity
- B. a five-volume framework for service management that covers design, transition, and delivery of service, and from which the ISO 20000 was developed
- C. a series of tools for process improvement that uses statistical methods to reduce defects in processes and

manufacturing

- D. a framework for enterprise architecture that provides a comprehensive approach for designing, planning, implementing, and governing an enterprise information architecture
- E. a framework for enterprise IP Address Management (IPAM) based on the IANA trusted IP lease allocation scheme

Answer: A

NEW QUESTION 116

What are three tools for ongoing monitoring and maintenance of a voice and video environment? (Choose three.)

- A. active monitoring via synthetic probes to measure loss, latency, and jitter
- B. passive monitoring via synthetic probes to measure loss, latency, and jitter
- C. flow-based analysis to measure bandwidth mix of applications and their flows
- D. flow-based analysis with PTP time-stamping to measure loss, latency, and jitter
- E. call management analysis to identify CAC failures and call quality issues

Answer: ACE

NEW QUESTION 117

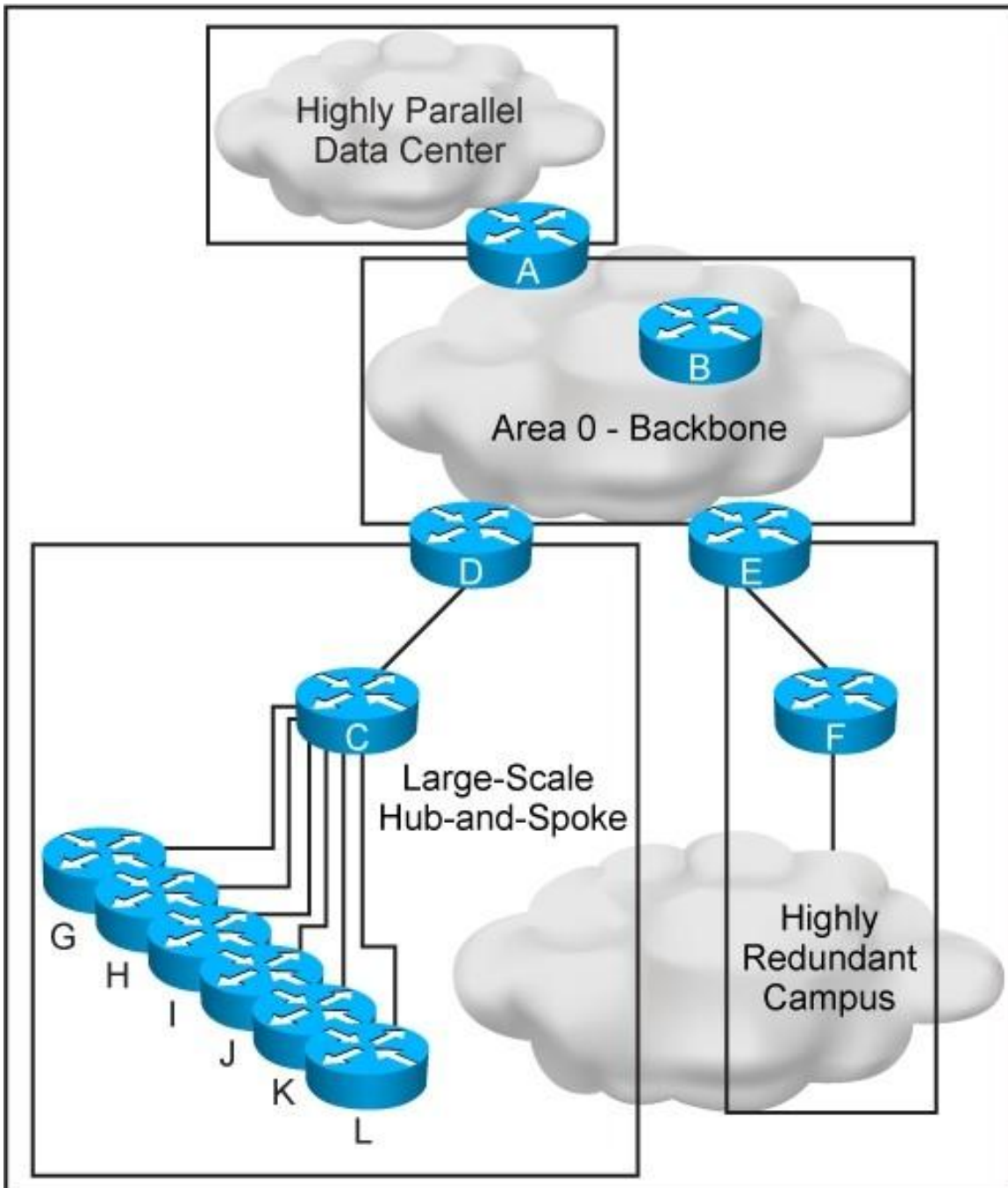
In an MPLS-based network, there is a link that constantly flaps. This flapping makes the network constantly reconverge and causes it to become unstable. Which two technologies can be deployed to resolve the design failure? (Choose two.)

- A. IP Event Dampening
- B. BFD
- C. Carrier Delay
- D. IP Routing Protocol Route Purge

Answer: AC

NEW QUESTION 118

Refer to the exhibit. This OSPF network has just been deployed with four areas, but the hub-and-spoke area frequently flaps. You must fix this design failure. Which two reasons describe why the implementation of link-state summarization will minimize the effect of the instability in this network? (Choose two.)



- A. It lowers CPU utilization on ABR routers.
- B. It allows for a more scalable network.
- C. It separates the data center area from the hub-and-spoke area.
- D. It runs a partial SPF on the campus area when any link of the hub-and-spoke flaps.
- E. It minimizes the number of prefixes that are advertised to other areas.

Answer: CD

NEW QUESTION 119

A company will integrate an IPv6 application into their network and wants to develop a test environment to evaluate application performance across the network. This application consists of both unicast and multicast traffic. The company wants to do this testing only in certain locations of its existing IPv4-only network, and all chosen locations should communicate with each other. Which tunneling technology works in this scenario?

- A. ISATAP
- B. 6PE
- C. DMVPN
- D. 6to4

Answer: C

NEW QUESTION 120

Which option forces traffic to take an explicit route across a backbone network?

- A. IGP cost
- B. TE metric
- C. TE affinity
- D. multiple IGPs

Answer: B

NEW QUESTION 121

A mobile network operator is designing an NGN backhaul and plans to migrate their legacy SDH and SONET-based transport network to a packet-based transport network. The NGN network must achieve similar failover and failback times as the legacy network (50 milliseconds). Which method does allow for similar failover and failback times on the new packet-based network?

- A. BFD
- B. E-OAM
- C. UDLC
- D. BPDU

Answer: B

NEW QUESTION 122

Which statement describes the main difference between the Layer 2 loop-free inverted U design and the Layer 2 loop-free U design?

- A. A loop-free U design has all uplinks active, but a loop-free inverted U design does not.
- B. A loop-free inverted U design has all uplinks active, but a loop-free U design does not.
- C. A loop-free U design extends VLANs between access switches, but a loop-free inverted U design does not.
- D. A loop-free U design extends VLANs between distribution switches, but a loop-free inverted U design does not.

Answer: C

NEW QUESTION 123

An enterprise company needs to transport multicast traffic between its hub-and-spoke WAN routers over an MPLS Layer 3 VPN provider that does not currently support multicast. Which option describes how this enterprise can achieve this requirement in a cost-effective way?

- A. Use MSDP over the WAN.
- B. Enable multicast routing on the WAN physical and tunnel interfaces.
- C. Create multicast-enabled GRE tunnels over the WAN between the hub-and-spoke routers.
- D. Provide an Internet link to each site and use DMVPN over the Internet.

Answer: C

NEW QUESTION 124

In a Cisco ACI environment, which option best describes "contracts"?

- A. a set of interaction rules between endpoint groups
- B. a Layer 3 forwarding domain
- C. to determine endpoint group membership status
- D. named groups of related endpoints

Answer: C

NEW QUESTION 125

You are developing the routing design for two merging companies that have overlapping IP address space. What must you consider when developing the routing and NAT design?

- A. Global to local NAT translation is done before routing.
- B. Local to global NAT translation is done after routing.
- C. Global to local NAT translation is done after policy-based routing.
- D. Local to global NAT translation is done before policy-based routing.

Answer: D

NEW QUESTION 125

Which option should be part of your network design to support dynamic mutual redistribution between multiple OSPFv2 and IS-IS boundaries, to avoid suboptimal routing?

- A. route tagging and administrative policies
- B. route filtering and administrative policies
- C. route aggregation and administrative policies
- D. disabling IS-IS wide metrics

Answer: B

NEW QUESTION 127

After a large EIGRP network had automatic summarization enabled throughout, it started experiencing routing loops. Which action should you take to quickly resolve the routing loops yet continue to perform summarization?

- A. Replace the automatic summarization with more specific summary routes.
- B. Redesign the IP addressing scheme.
- C. Redistribute connected routes at major IP network boundaries.
- D. Increase the AD of the automatically summarized routes.

Answer: A

NEW QUESTION 128

Which openstack component implements role-based access control?

- A. Horizon
- B. Nova
- C. Neutron
- D. Keystone

Answer: A

NEW QUESTION 129

Service provider XYZ wants to implement IPv6 on their MPLS network using MPLS 6PE or 6VPE techniques. Currently XYZ providers IPv4 multicast services over an MPLS network by using MVPN, and wants to provide parallel IPv6 multicast services. Which two multicast solutions enable the IPv6 multicast services? (Choose two.)

- A. MVPN for IPv6 multicast service
- B. MPLS 6PE, because it provides IPv6 multicast support by default
- C. PIM-DM to enable IPv6 multicast in conjunction with MPLS 6PE/6VPE
- D. an overlay model using Layer 2 MPLS tunnels
- E. MPLS 6VPE, because it provides IPv6 multicast support by default

Answer: AD

NEW QUESTION 130

Which statement about DHCPv6 Guard features design is true?

- A. A certificate must be installed on the DHCPv6 server and relay agent.
- B. DHCPv6 client requests can be rate-limited to protect the control plane.
- C. Rogue DHCPv6 servers cannot assign IPv6 addresses to clients.
- D. DHCPv6 client requests can be filtered to protect the data plane.

Answer: C

NEW QUESTION 131

You are designing a FabricPath network that connects to a spine-and-leaf topology using layer 2 IS-IS as the IGP. The solution should be able to detect changes in the network topology and calculate loop-free paths to other nodes in the network that are being used as top-of-rack switches. Which four options are characteristics of this FabricPath design solution? (Choose four.)

- A. The FabricPath domain should be replaced because it does not run STP.
- B. The switch operating system uses multiple equal-cost, parallel links that provide ECMP.
- C. To use the basic FabricPath functionality, you must configure IS-IS on every interface between the leaf-and-spine switches.
- D. FabricPath Layer 2 IS-IS uses the standard IS-IS functionality to populate up to 16 routes for a given destination switch.
- E. This path is used for forwarding unicast Fabricpath frames.
- F. Each switch computes its shortest path to every other switch in the network using the SPF algorithm.
- G. The interfaces in a FabricPath network run only the FabricPath Layer 2 IS-IS protocol with FTags disabled.

Answer: BDEF

NEW QUESTION 132

Which Option is an example of SaaS?

- A. Google Apps
- B. Amazon AWS
- C. Google App Engine
- D. Microsoft Azure

Answer: A

NEW QUESTION 133

How should you compensate for jitter on an IP network so it carries real-time VoIP traffic with acceptable voice transmission quality?

- A. Set up VAD to replace gaps on speech with comfort noise.
- B. Set up a playout buffer to play back the voice stream.
- C. Deploy RSVP for dynamic VoIP packet classification.
- D. Change CODEC from G.729 to G.711.

Answer: B

NEW QUESTION 134

A company decided to replace IEEE 802.1s on the campus and you must propose a Layer 2 open standard technology that is highly scalable, ensures a resilient loop-free switched domain, and allows for utilizing all links in the Layer 2 domain. Which Layer 2 technology meets these requirements?

- A. TRILL
- B. VxLAN
- C. LACP
- D. FabricPath
- E. MST

Answer: A

NEW QUESTION 135

A multinational enterprise company has many branches in the Americas, Europe, and Asia Pacific with headquarters in London. Branch offices use Ethernet (bandwidth range from 1 Mb/s to 10 Mb/s) as access technology to connect to the headquarters and the regional hubs. The company is currently implementing VoIP and QoS in all their locations, and they are worried about jitter between their branches and the headquarters. Which option reduces the effect of jitter?

- A. buffering at endpoints
- B. Call Admission Control
- C. increase the bandwidth of the links
- D. WRED

Answer: A

NEW QUESTION 136

Which two functions are performed at the core layer of the three-layer hierarchical network design model? (Choose two.)

- A. QoS classification and marking boundary
- B. fast transport
- C. reliability
- D. fault isolation
- E. load balancing

Answer: BC

NEW QUESTION 137

Which are two general SDN characteristics? (Choose two.)

- A. OVSDB is an application database management protocol.
- B. Northbound interfaces are open interfaces used between the control plane and the data plane.
- C. OpenFlow is considered one of the first Northbound APIs used by SDN controllers.
- D. Southbound interface are interfaces used between the control plane and the data plane.
- E. The separation of the control plane from the data plane.

Answer: DE

NEW QUESTION 138

.....

Get Complete Version Exam 352-001 Dumps with VCE and PDF Here



<https://www.passleader.com/352-001.html>