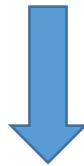


Cisco CCDP Certification 300-320 Exam



- Vendor: Cisco
- Exam Code: 300-320
- Exam Name: Designing Cisco Network Service Architectures

Get Complete Version Exam 300-320 Dumps with VCE and PDF Here



<https://www.passleader.com/300-320.html>

NEW QUESTION 51

Which option lists the EIGRP minimum timer settings for hello and dead timers in seconds?

- A. 4 and 6
- B. 2 and 4
- C. 2 and 6
- D. both 6

Answer: C

NEW QUESTION 52

Which option is the Cisco preferred, most versatile, and highest-performance way to deploy IPv6 in existing IPv4 environments?

- A. dual stack
- B. hybrid
- C. service block
- D. dual service

Answer: A

NEW QUESTION 53

Which option is the preferred and most versatile model to deploy IPv6 in existing IPv4 environments?

- A. hybrid
- B. service block
- C. dual stack
- D. processes

Answer: C

NEW QUESTION 54

Which router type injects external LSAs into the OSPF database using either other routing protocols or static routes?

- A. backbone router
- B. ABR
- C. internal router
- D. designated router
- E. ASBR

Answer: E

NEW QUESTION 55

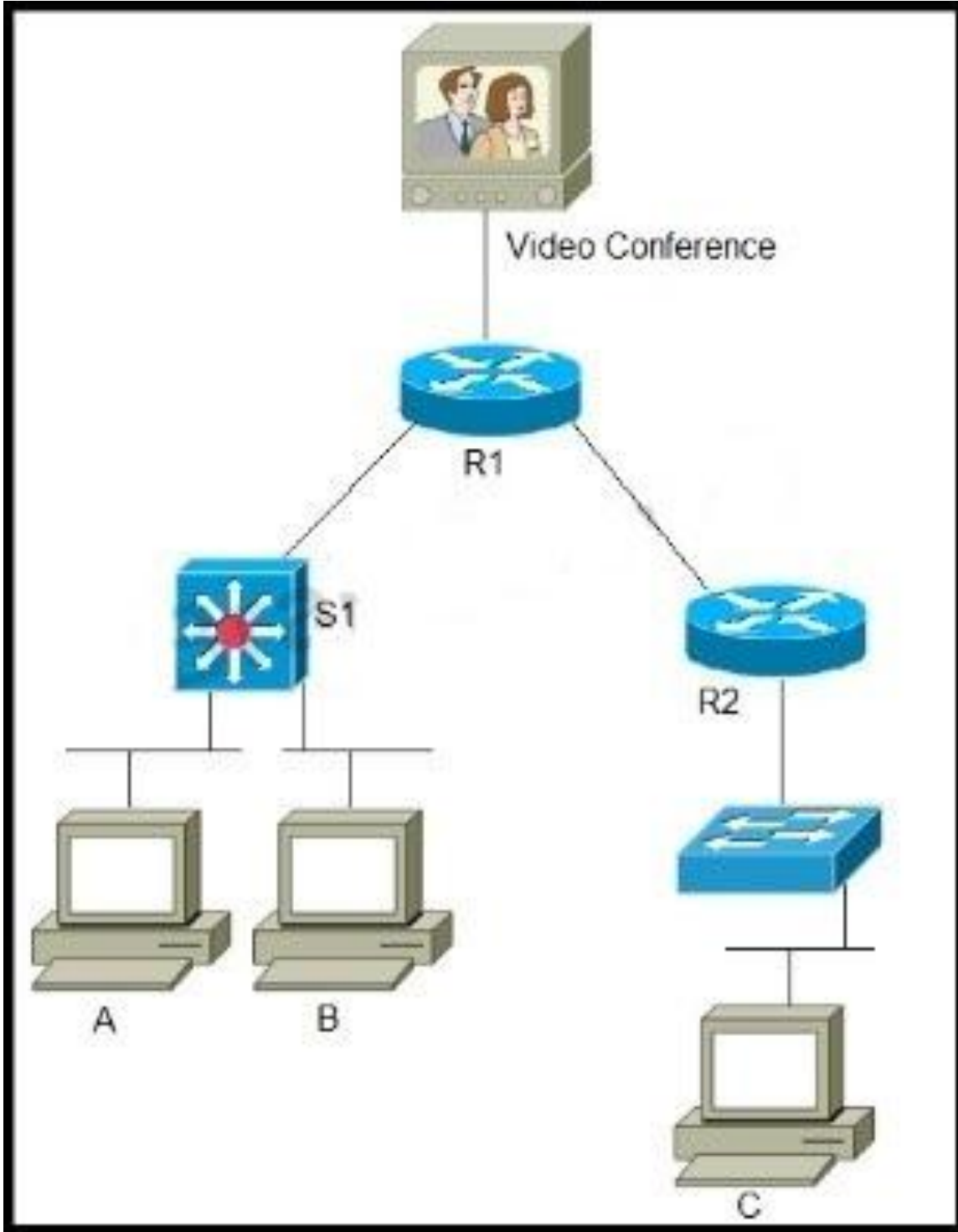
Given the addresses 10.10.16.0/24 and 10.10.23.0/24, which option is the best summary?

- A. 10.10.0.0/16
- B. 10.10.8.0/23
- C. 10.10.16.0/23
- D. 10.10.16.0/21

Answer: D

NEW QUESTION 56

Refer to the exhibit. The network engineer wants to ensure that receiver A does not receive traffic from the video conference.



For multicast traffic, where must the filtering be placed to fulfill that requirement?

- A. R1
- B. Video Conference
- C. A
- D. S1
- E. R2

Answer: D

NEW QUESTION 57

Which two VPN solutions extend the routing capabilities of basic IPsec VPNs? (Choose two.)

- A. GRE
- B. NVI
- C. DES
- D. VTI
- E. AES

Answer: AD

NEW QUESTION 58

Which option is an advanced WAN services design consideration for a multipoint architecture that connects two or more customer devices using Ethernet bridging techniques over an MPLS network?

- A. VPLS
- B. Metro Ethernet
- C. MPLS
- D. SONET/SDH

Answer: A

NEW QUESTION 59

Which three options are basic technical metrics that a good SLA includes? (Choose three.)

- A. packet loss
- B. devices
- C. latency
- D. clients
- E. IP availability
- F. distance

Answer: ACE

NEW QUESTION 60

Which option is a benefit of site-to-site VPNs?

- A. less configuration required than a WAN circuit
- B. more secure than a dedicated WAN circuit
- C. less expensive than a dedicated WAN circuit
- D. more reliable than a dedicated WAN circuit

Answer: C

NEW QUESTION 61

Which three options are basic design principles of the Cisco Nexus 7000 Series for data center virtualization? (Choose three.)

- A. easy management
- B. infrastructure scalability
- C. cost minimization
- D. upgrade of technology
- E. transport flexibility
- F. operational continuity

Answer: BEF

NEW QUESTION 62

Which two options are advantages of having a modular design instead of an EOR design in a data center? (Choose two.)

- A. cooling constraints
- B. cable bulk
- C. decreased STP processing
- D. redundancy options
- E. cost minimization
- F. low-skilled manager

Answer: CD

NEW QUESTION 63

Which statement about NIC teaming configurations is true?

- A. With ALB, all ports use one IP address and multiple MAC addresses.
- B. With AFT, two NICs connect to the different switches.
- C. With SFT, all ports are active.
- D. With AFT, all ports use one IP address and multiple MAC addresses.

Answer: A

NEW QUESTION 64

Which two services are provided at the aggregation layer in a data center design? (Choose two.)

- A. service module integration
- B. default gateway redundancy
- C. high-speed packet switching backplane
- D. network interface card teaming
- E. Layer 3 domain definitions

Answer: AB

NEW QUESTION 65

Which two options are two benefits of a Layer 2 looped model? (Choose two.)

- A. extends VLANs between switches that are connected to a common aggregation module
- B. prevents uplink ports from entering the spanning-tree blocking state
- C. provides quick convergence with Rapid Spanning Tree Protocol
- D. increases performance to end hosts using directly connected, bonded Layer 2 links

Answer: AC

NEW QUESTION 66

ACME corporation owns a single MDS. Which two SAN tools can be used to optimize the use and cost of the switching hardware? (Choose two.)

- A. zoning
- B. IVR
- C. VSAN
- D. iSCSI

Answer: AC

NEW QUESTION 67

Source traffic is sent to a VIP on an SLB device, which in turn is routed to the destination server. Return traffic is policy-based routed back to the SLB. Which SLB design has been implemented?

- A. router mode
- B. inline bridge mode
- C. one-armed mode
- D. two-armed mode

Answer: D

NEW QUESTION 68

Which four options are network virtualization technologies that are employed in the data center? (Choose four.)

- A. VLAN
- B. VSAN
- C. VRF
- D. VRP
- E. VLC
- F. VPC

Answer: ABCF

NEW QUESTION 69

Which three options are the three layers of the Cisco design in the data center architecture? (Choose three.)

- A. core layer
- B. distribution layer
- C. service layer
- D. aggregation layer
- E. Layer 2 domain sizing

F. access layer

Answer: ADF

NEW QUESTION 70

Which three virtualization categories are in campus networks? (Choose three.)

- A. Layer 2 virtualization
- B. Layer 3 clustering
- C. network virtualization
- D. device virtualization
- E. network clustering
- F. device clustering

Answer: CDF

NEW QUESTION 71

Which two key components are related to one firewall per ISP design option for e-commerce? (Choose two.)

- A. It is a common approach to single-homing.
- B. This approach is commonly used in large sites.
- C. Any failure on an edge router results in a loss of session.
- D. It has one NAT to two ISP-assigned blocks.
- E. It is difficult to set up and administer.

Answer: CD

NEW QUESTION 72

What is the latest Cisco high-availability solution?

- A. VRRP
- B. HSRP
- C. VSS
- D. GLBP

Answer: C

NEW QUESTION 73

Which two options are VRF components. (Choose two.)

- A. RIB
- B. VSS
- C. FIB
- D. HSRP

Answer: AC

NEW QUESTION 74

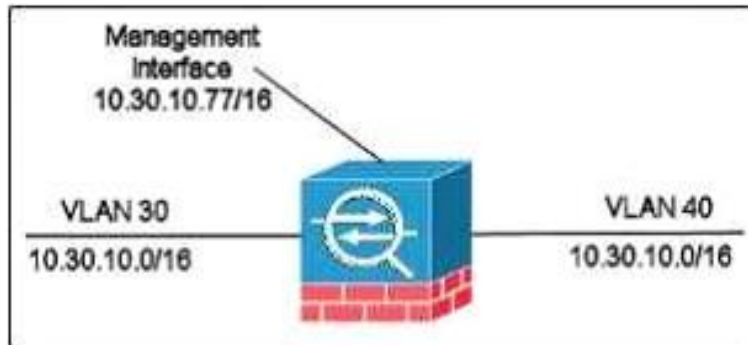
Which two options are storage topologies? (Choose two.)

- A. WAS
- B. DAS
- C. CAS
- D. NAS

Answer: BD

NEW QUESTION 75

Refer to the exhibit. Which statement about the ASA is true?



- A. The management interface is reachable only from VLAN 30.
- B. The management interface is reachable only from VLAN 40.
- C. It is running in transparent mode.
- D. It is running in routed mode.

Answer: C

NEW QUESTION 76

Which statement about IPS and IDS solutions is true?

- A. IDS and IPS read traffic only in inline mode.
- B. IDS and IPS read traffic only in promiscuous mode.
- C. An IDS reads traffic in inline mode, and an IPS reads traffic in promiscuous mode.
- D. An IDS reads traffic in promiscuous mode, and an IPS reads traffic in inline mode.

Answer: D

NEW QUESTION 77

Which NAC design model matches the following definitions?

- NAS is deployed centrally in the core or distribution layer.
- Users are multiple hops away from the Cisco NAS.
- After authentication and posture assessment, the client traffic no longer passes through the Cisco NAS.
- PBR is needed to direct the user traffic appropriately.

- A. Layer 3 in-band virtual gateway
- B. Layer 3 out-of-band with addressing
- C. Layer 2 in-band virtual gateway
- D. Layer 2 out-of-band virtual gateway

Answer: B

NEW QUESTION 78

Which option is a recommended firewall topology?

- A. using two firewalls with stateful failover switched mode
- B. using one firewall with NAT enabled in transparent mode
- C. using two firewalls in active/active mode
- D. using one firewall with stateful failover enabled in routed mode

Answer: C

NEW QUESTION 79

Which three options are recommended practices when configuring VTP? (Choose three.)

- A. Set the switch to transparent mode.
- B. Set the switch to server mode.
- C. Enable VLAN pruning.
- D. Disable VLAN pruning.
- E. Specify a domain name.
- F. Clear the domain name.

Answer: ADE

NEW QUESTION 80

Which four primary attributes define a WAN service? (Choose four.)

- A. bandwidth
- B. bursting capacity
- C. memory
- D. CPU
- E. QoS classes and policies
- F. latency
- G. multicast support

Answer: ABEG

NEW QUESTION 81

Transition to Named EIGRP without causing an outage?

- A. router eigrp NAME
- B. router eigrp 1 named NAME
- C. router eigrp 1
eigrp upgrade-cli NAME
- D. interface fa0/1
ip router eigrp 1 named NAME

Answer: C

NEW QUESTION 82

Which technology should a network designer combine with VSS to ensure a loop free topology with optimal convergence time?

- A. Portfast
- B. UplinkFast
- C. RPVST +
- D. Multichassis EtherChannel

Answer: C

NEW QUESTION 83

HSRP has been implemented on distribution switches but no priority has been defined. Which one of the two switches will be active?

- A. The one with the higher IP address configured on the interface
- B. The one with the higher MAC address configured on the interface
- C. The one which booted the last
- D. The one with the higher bandwidth configured on the interface

Answer: A

NEW QUESTION 84

An Engineer is designing a Cisco Application Centric Infrastructure network. What is the expected number of links between Spine switches?

- A. 0
- B. 1
- C. 2
- D. 4

Answer: A

NEW QUESTION 85

When designing data centers for multitenancy, which two benefits are provided by the implementation of VSAN and zoning? (Choose two.)

- A. VSAN provides a means of restricting visibility and connectivity among devices connected to a zone
- B. VSANs have their own set of services and address space, which prevents an issue in one VSAN from affecting others
- C. Zones provide the ability to create many logical SAN fabrics on a single Cisco MDS 9100 family switch
- D. VSANs and zones use separate fabrics
- E. Zones allow an administrator to control which initiators can see which targets

Answer: BE

NEW QUESTION 86

For which engine an IPS can use its reputation awareness? (Choose two.)

- A. Reputation filtering
- B. Reputation subscriptions
- C. Correlation rules
- D. Global correlation inspection

Answer: AD

Explanation:

http://www.cisco.com/c/en/us/products/collateral/security/ips-4500-series-sensors/white_paper_c11-715386.html

NEW QUESTION 87

When designing a layer 2 STP-based LAN with Layer 3 FHRP, which design recommendation should be followed?

- A. Avoid modifying default STP and FHRP timers.
- B. Assign the native VLAN to the lowest number in use.
- C. Avoid configuring router preemption.
- D. Align the STP root with the active FHRP device.

Answer: C

NEW QUESTION 88

A company have single ASA hardware box and they need to separate company departments in way that they can apply different rules on them, ACL, NAT, and so on. Which mode is needed?

- A. routed mode
- B. transparent mode
- C. multiple context mode
- D. active failover mode

Answer: C

NEW QUESTION 89

Engineer is designing QoS for application. Which QoS architecture should he choose if application needs to have reserved bandwidth prior to sending data?

- A. Differentiated services
- B. Integrated services
- C. LLQ
- D. ToS

Answer: B

NEW QUESTION 90

An engineer chose to design an architecture where distribution switches are in VSS and are connected to access switches using Multichassis Etherchannel. What is the resulting topology?

- A. Looped
- B. Ring
- C. Hybrid
- D. Star

Answer: D

NEW QUESTION 91

With which of the following could EIGRP and OSPF achieve sub second convergence ? (Choose two.)

- A. BFD
- B. Triangle topology
- C. Square topology
- D. Ring topology
- E. Tuning timers
- F. IP SLA

Answer: AB

NEW QUESTION 92

A network designer needs to explain the advantages of route summarization to a client. Which two options are advantages that should be included in the explanation? (Choose two.)

- A. Increases security by advertising fake networks.
- B. Reduces routing table size.
- C. Advertises detailed routing size
- D. Utilizes the routers full CPU capacity.
- E. Reduces the upstream impact of a flapping interface.

Answer: BD

NEW QUESTION 93

A company is running BGP on the edge with multiple service providers in a primary and secondary role. The company wants to speed up time if a failure were to occur with the primary, but they are concerned about router resources. Which method best achieves this goal?

- A. Utilize BFD and lower BGP hello interval
- B. Decrease the BGP keepalive timer
- C. Utilize BFD and tune the multiplier to 50
- D. Utilize BFD and keep the default BGP timers

Answer: D

NEW QUESTION 94

What is one limitation of MPLS Layer 3 VPN networks?

- A. They require less powerful routers with limited capabilities
- B. They require the customer to control routing
- C. They support only IP traffic
- D. PE routers are underutilized

Answer: C

NEW QUESTION 95

If your enterprise is connected to 2 ISP, which method could you use to prevent being used as a transit network? (Choose two.)

- A. filter outbound
- B. filter inbound
- C. throw both ISP
- D. choose only one ISP

E. Allow every routes inbound

Answer: AE

Explanation:

<https://www.cisco.com/c/en/us/support/docs/ip/border-gateway-protocol-bgp/23675-27.html>

NEW QUESTION 96

Two company want to merge their OSPF networks , but they run different OSPF domains. Which is option must be created to accomplished this requirement?

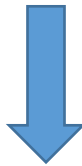
- A. OSPF virtual link to bridge the backbone areas of the two company together
- B. Route Summarization
- C. Static OSPF
- D. Redistribute routes between domains

Answer: A

NEW QUESTION 97

.....

Get Complete Version Exam 300-320 Dumps with VCE and PDF Here



<https://www.passleader.com/300-320.html>