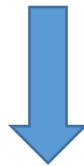


Cisco CCIE Certification 400-101 Exam



- Vendor: Cisco
- Exam Code: 400-101
- Exam Name: CCIE Routing and Switching Written Exam

Get Complete Version Exam 400-101 Dumps with VCE and PDF Here



<https://www.passleader.com/400-101.html>

NEW QUESTION 103

Which technology allows several switches to operate together as one device?

- A. HSRP
- B. VRRP
- C. LACP
- D. Stack Wise

Answer: D

NEW QUESTION 104

Which two statements about OSPFv3 are true? (Choose two.)

- A. It supports the use of a cluster ID for loop prevention.
- B. It supports unicast address families for IPv6 only.
- C. It supports unicast address families for IPv4 and IPv6.
- D. It supports only one address family per instance.
- E. It supports multicast address families for IPv4.
- F. It supports multicast address families for IPv6.

Answer: CD

NEW QUESTION 105

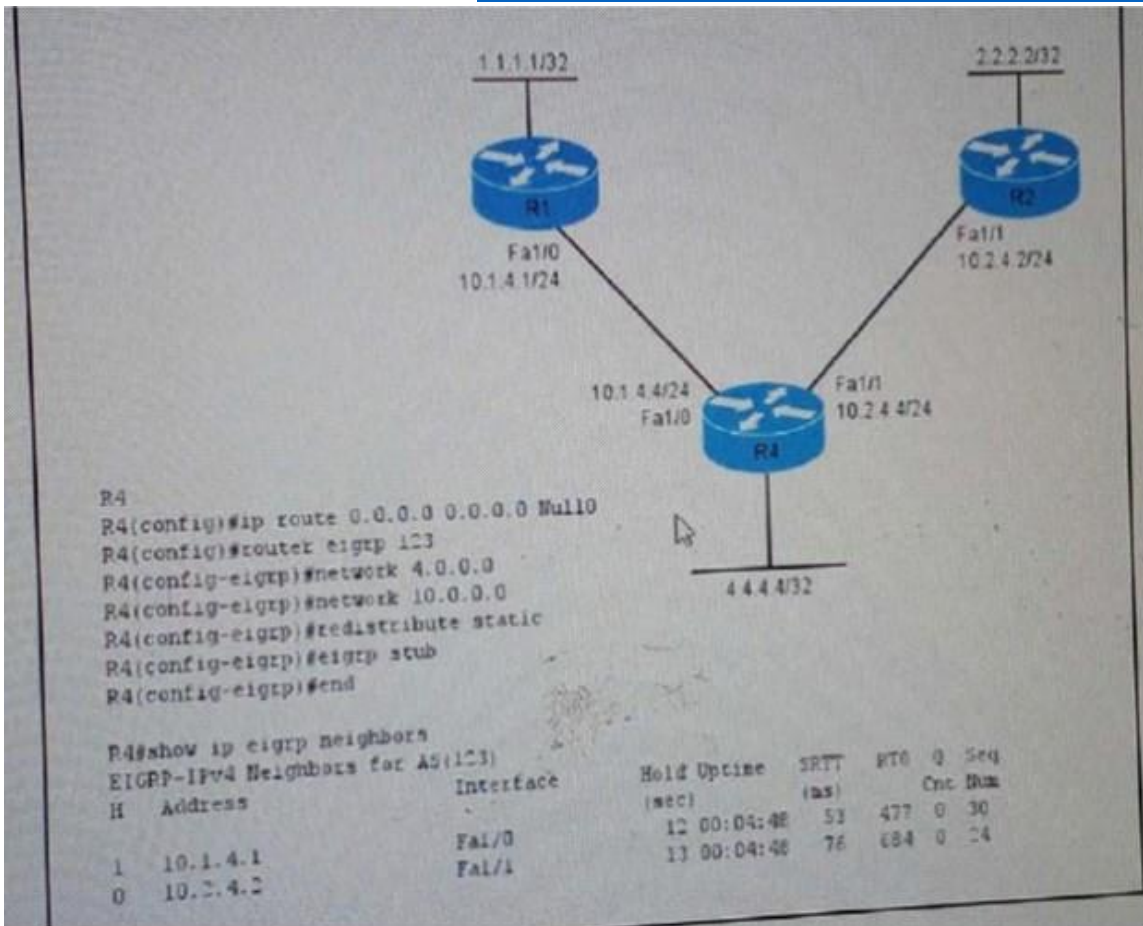
Which MLD message type does a host send to join rrulticast groups?

- A. Join/prune
- B. Hello
- C. Query
- D. Done
- E. Report
- F. Assert

Answer: E

NEW QUESTION 106

Refer to the exhibit. If R4 is configured as table, which IP.....?



- A. 0.0.0.0/0, 4.4.4.4/32 and 10.2.4.0/24
- B. 0.0.0.0/0 and 4.4.4.4/32 only
- C. 4.4.4.4/32 and 10.1.4.0/24 only
- D. 4.4.4.4/32 and 10.2.4.0/24 only
- E. 4.4.4.4/32, 10.2.4.0/24 and 2.2.2.2/32

Answer: D

NEW QUESTION 107

Which TCP features allows a client to request a specific packet that was lost?

- A. flow control
- B. sliding window
- C. fast recovery
- D. selective acknowledgment

Answer: D

NEW QUESTION 108

Refer to the Exhibit. Which configuration can you implement on PE-1 to allow CE-1 to receive delegated IPv6 prefixes?

.....

Answer: E

NEW QUESTION 109

What are two major requirements for configuring an extended VLAN with VTPv2? (Choose two.)

- A. VLAN pruning must be enabled
- B. The device must be operating in VTP transparent mode
- C. The configuration must be made in global configuration mode
- D. The VLAN must be configured in VLAN database mode
- E. The reduced MAC address feature must be disabled

Answer: BC

NEW QUESTION 110

Which two statements about MLD snooping are true?

- A. MLD protocol messages can be sent in both IGMPv4 and ICMPv4 formats.
- B. It supports private VLANs.
- C. It limits the Layer 2 multicast traffic that is generate by routing protocols.
- D. PFC modes support MLD version 2 only.
- E. The MLD snooping querier requires the VLAN interface to be configured with an IPv6 address.

Answer: BE

NEW QUESTION 111

Which IPv6 tunneling mechanism requires a service provider to nude one of its own native IPv6 blocks to guarantee that its IPv6 hosts will be reachable?

- A. 6rd tunneling
- B. Automatic 6to4 tunneling
- C. Manual IPv6 ip tunneling
- D. NAT-PT tunneling
- E. Automatic 4to6 tunneling
- F. ISATAP tunneling

Answer: F

NEW QUESTION 112

Refer to the exhibit. After you applied this configuration to R1 and R2, they failed to form an ISIS adjacency. Which reason for the problem is most likely true?

```
R1
interface Serial1/0
  mtu 1514
  bandwidth 1000
  ip address 192.168.12.97 255.255.255.224
  ip router isis
  serial restart-delay 0
router isis
  net 01.0001.0000.0000.0001.00

R2
interface Serial1/0
  mtu 1518
  bandwidth 2000
  ip address 192.168.12.98 255.255.255.224
  ip router isis
  serial restart-delay 0
router isis
  net 01.0001.0000.0000.0002.00
```

- A. The network statements are mismatched
- B. The IP subnets are mismatched
- C. The bandwidth is mismatched
- D. The MTUs are mismatched

Answer: D

NEW QUESTION 113

Which two statements about Cisco Express Forwarding are true? (Choose two.)

- A. Adjacency tables and Cisco Express Forwarding tables require packet switching.
- B. Cisco Express Forwarding tables contain forwarding information and adjacency tables contain reachability information.
- C. Adjacency tables and Cisco Express forwarding tables can be separate.
- D. Changing MAC header rewrite strings requires cache validation.
- E. Cisco Express Forwarding tables contain reachability information and adjacency tables contain forwarding information.

Answer: CE

NEW QUESTION 114

On which three options can Cisco PfR base its traffic routing? (Choose three.)

- A. Time of day
- B. Network performance
- C. Router IOS version
- D. User-defined link capacity thresholds
- E. An access list with permit or deny statements

F. Load-balancing requirements

Answer: BDF

NEW QUESTION 115

Which three statements about BGP soft reconfiguration are true? (Choose three)

- A. Outbound soft reconfiguration requires additional configuration on the BGP neighbor
- B. Inbound soft reconfiguration requires additional memory
- C. Outbound soft reconfiguration requires additional memory
- D. Inbound soft reconfiguration stores an additional copy of the received from a neighbor before routing policies take effect
- E. Inbound soft reconfiguration requires additional memory
- F. Outbound soft reconfiguration stores an additional copy of the routes advertised to a neighbor before routing policies take effect

Answer: BEF

NEW QUESTION 116

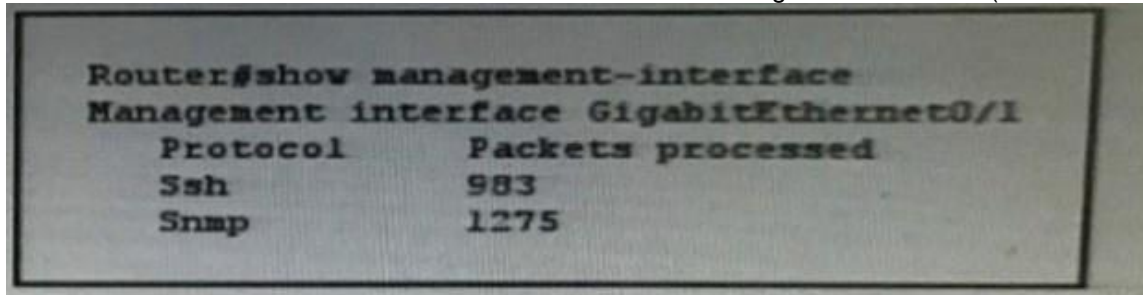
What mechanism should you choose to prevent unicast flooding?

- A. Make sure that all end systems are connected to the network with a single physical connection.
- B. Use control plane policing (CPP) to limit unicast flooding.
- C. Configure the ARP cache timers to be longer than the switch forwarding cache (CAM) timers.
- D. Configure the switch forwarding cache (CAM) timers to be longer than the ARP cache timers.

Answer: D

NEW QUESTION 117

Refer to the exhibit. Which two statements about the device configuration are true? (Choose two.)



```
Router#show management-interface
Management interface GigabitEthernet0/1
  Protocol      Packets processed
  Ssh           983
  Snmp          1275
```

- A. The device has control-plane protection enabled.
- B. The device implicitly allows Tel net connections.
- C. The GigabitEthernet0/1 interface of the device allows incoming SSH and SNMP connections.
- D. The device has management-plane protection enabled.
- E. The device allows SSH connections to its loopback interface.

Answer: CD

NEW QUESTION 118

What are the two requirements for BGP to install a classful network into the BGP routing table? (Choose two.)

- A. Synchronization is disabled.
- B. The AS contains the entire classful network.
- C. Auto-summary is enabled.
- D. A classful network is statement with a classful mask is in the routing table.
- E. A classful network statement with a lower administrative distance in the routing table.
- F. Synchronization is enabled.

Answer: CD

NEW QUESTION 119

Which authentication types does OSPF support?

- A. Null (or no authentication), clear text and MD5.
- B. Clear text only.
- C. MD5 only.
- D. MD5 and clear text.
- E. Null (or no authentication) and clear text.

Answer: A

NEW QUESTION 120

.....

NEW QUESTION 149

In which way does the Bridge Assurance mechanism modify the default spanning-tree behavior in an effort to prevent bridging loops?

- A. If BPDUs are no longer received on a port, the switch immediately sends out a TCN BPDU.
- B. Extended topology information is encoded into all BPDUs.
- C. BPDUs are sent bidirectional on all active network ports, including blocked and alternate ports.
- D. Received BPDUs are looped back towards the sender to ensure that the link is bidirectional.

Answer: C

NEW QUESTION 150

Which information is contained in an OSPF Type 7 Not-So-Stubby Area NSSA External LSA?

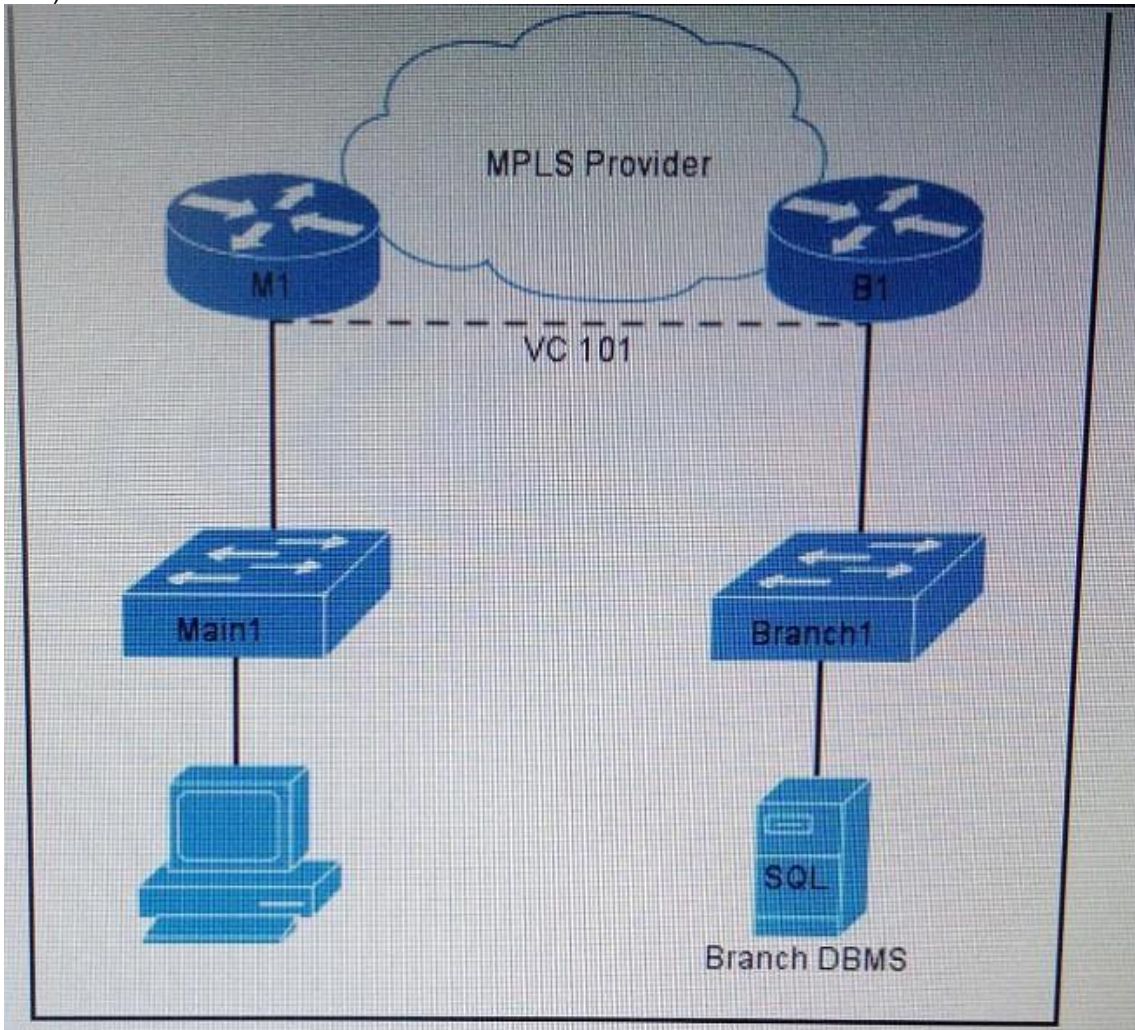
- A. External network address, mask, and cost to reach network that is external to the OSPF domain and only within the NSSA.
- B. The external network address, mask and cost to reach networks that are external to the OSPF NSSA, including the default route.
- C. The address of routers that connect the current area to other areas and cost to reach those routers.
- D. The paths and costs to reach other stub area border routers in the OSPF routing domain.
- E. The paths and costs to all OSPF NSSA areas that are external to the current area.

Answer: A

NEW QUESTION 151

Refer to the exhibit. The Main1 and Branch1 switches are connected directly over an MPLS pseudowire, and both run UDLD. After router B1 reloads because of a power failure, the pseudowire is restored. However, the Branch 1 switch is unable to reach the Main 1 switch. Which

two actions can you take to restore connectivity and prevent the problem from recurring? (Choose two.)



- A. Issue the shutdown and no shutdown commands on both the Branch1 switch uplink to the B1 router and the Main1 switch's uplink to the M1 router.
- B. Configure a backup GRE tunnel between the Main1 and Branch1 switches.
- C. Enable UDLD recovery on both the Main1 and Branch1 switches.
- D. Enable errdisable recovery on both the Main1 and Branch1 switches.
- E. Configure a backup pseudowire between the Main1 and Branch1 switches.

Answer: AD

NEW QUESTION 152

Which statement about Auto-RP is true?

- A. An RP that is tied to a loopback address must be configured.
- B. All interfaces must be configured in sparse mode.
- C. All interfaces must be configured in sparse-dense mode.
- D. All interfaces must be configured in dense mode.

Answer: C

NEW QUESTION 153

Which technology can be used to secure the edge of an STP domain?

- A. root guard
- B. BPDU guard
- C. UplinkFast
- D. BPDU filter

Answer: A

NEW QUESTION 154

Which three features support object tracking? (Choose three.)

- A. OSPF
- B. BFD
- C. EEM
- D. HSRP
- E. PfR
- F. vPC

Answer: CDF

NEW QUESTION 155

Which GDOI key is responsible for encrypting control plane traffic?

- A. The traffic encryption key
- B. The key-chain
- C. The preshared key
- D. The key encryption key

Answer: D

NEW QUESTION 156

Which two statements about private VLAN communications are true? (Choose two.)

- A. Promiscuous ports communicate with all other ports.
- B. Primary VLAN traffic is passed across trunk interfaces.
- C. Promiscuous ports connect only to routers.
- D. Isolated ports communicate with other isolated ports.

Answer: AB

NEW QUESTION 157

Which three options are three of the valid message types for DHCPv6? (Choose three.)

- A. Offer
- B. Request
- C. Leave
- D. Solicit

- E. Discover
- F. Advertise

Answer: BDF

NEW QUESTION 158

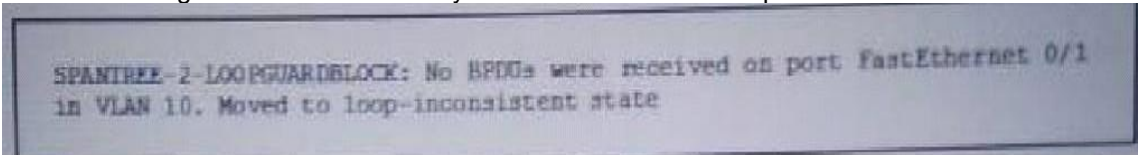
Which IPv6 migration method allows IPv4-only devices to communicate with IPv6-only devices?

- A. GRE tunnel
- B. dual stack
- C. ISATAP tunnel
- D. NAT64

Answer: D

NEW QUESTION 159

Refer to the exhibit. While troubleshooting an issue with a blocked switch port, you find this error in the switch log. Which action should you take first to locate the problem?



- A. Check the attached switch for a BPDU filter.
- B. Test the link for unidirectional failures.
- C. Check the attached switch for an interface configuration issue.
- D. Execute the show interface command to check FastEthernet 0/1.

Answer: A

NEW QUESTION 160

Which three pieces of information are carried in OSPF type-3 LSAs? (Choose three.)

- A. Forwarding address
- B. IP subnet
- C. Subnet mask
- D. Authentication type
- E. External route tag
- F. Metric

Answer: ACF

NEW QUESTION 161

What is one requirement to support the IGMP proxy feature?

- A. Devices on the unidirectional link must be in the same IP subnet.
- B. Devices connected to a unidirectional link must disable Internet access.
- C. IGMP snooping must be disabled.
- D. PIM-DM must be enabled on all unidirectional links.

Answer: A

NEW QUESTION 162

Which routing protocol is incompatible with VRF-lite?

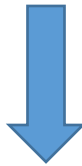
- A. IS-IS
- B. EIGRP
- C. BGP
- D. OSPF

Answer: B

NEW QUESTION 163

.....

Get Complete Version Exam 400-101 Dumps with VCE and PDF Here



<https://www.passleader.com/400-101.html>