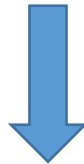


Cisco CCIE Certification 400-201 Exam



- Vendor: Cisco
- Exam Code: 400-201
- Exam Name: CCIE Service Provider Written Exam

Get Complete Version Exam 400-201 Dumps with VCE and PDF Here



<https://www.passleader.com/400-201.html>

NEW QUESTION 158

A Corporate_ABC located in the US acquired Company_XYZ, which is located in Europe. Both companies are connected to the internet using their local ISP. A management VLAN must be built using subnet 192.168.1.0/24 across the ABC and XYZ. Which solution meets this requirement?

- A. VPLS
- B. AToM
- C. Layer 3 VPN
- D. L2TPv3

Answer: D

NEW QUESTION 159

In a L2VPN service, customer CE1 sends frames to PE1 using a CoS marking value of 3. However, the remote CE2 receives those frames from PE2 with a CoS marking value of 0. Which description of this behavior is true?

- A. Egress PE2 is not configured with an outbound policy-map facing CE2 to preserve the customer CoS marking.
- B. Egress PE2 is not configured with mpls ldp explicit-null command.
- C. Ingress PE1 is remarking the CoS frame received from CE1 with value of 0.
- D. Egress PE2 is marking EXP 0 upon label imposition.

Answer: C

NEW QUESTION 160

The service provider has the following VPLS requirements. A PE must learn dynamically remote PEs that are members of the same VPLS domain. The VPLS signaling must be in a point-to-multipoint fashion way according to RFC 4761 (Kompella). Which feature must be enabled to meet these requirements?

- A. LDP signaling
- B. BGP signaling
- C. RSVP signaling
- D. RSVP auto discovery
- E. LDP auto discovery

Answer: B

Explanation:

RFC 4761

Virtual Private LAN Service (VPLS)

Using BGP for Auto-Discovery and Signaling

NEW QUESTION 161

A layer 3 VPN customer opened a case that reports connectivity loss with remote sites. An operations engineer realized this connectivity loss happened after the LDP label filtering was applied. What is the root cause of this issue?

- A. Labels were not allocated for the P and PE physical interface
- B. Labels were not allocated for the PE, P and RR physical interface
- C. Labels were not allocated for the CE loopback and physical interface
- D. Labels were not allocated for the P loopbacks
- E. Labels were not allocated for the PE, P and RR loopbacks

F. Labels were not allocated for the PE loopback

Answer: F

NEW QUESTION 162

An operator enable BFD in echo mode and now CPU is high. Which option is the most likely solution to the problem?

- A. Reduce the BFD control plane packet rate
- B. Change from echo mode to asynchronous mode
- C. Reduce the BFD packet rate
- D. Disable ICMP redirects on an interface
- E. Disable BFD altogether

Answer: D

NEW QUESTION 163

Which technology enables operators to move the functionality of networking devices such as routers and firewalls away from proprietary hardware to servers and off-the-shelf commercially available purpose-built hardware?

- A. network Function Virtualization
- B. Openstack
- C. Operations support systems
- D. Software Defined Networ

Answer: A

NEW QUESTION 164

An engineer is configuring an Embedded Packet Capture, Which two limitations must the engineer be aware of?

- A. To limit the capture to desired traffic in EPC, control plane policing, access lists, and NBAR can be used
- B. EPC captures only multicast packets on ingress and does not capture the replicated packets on egress
- C. Existing EPC features can be supported on Cisco IOS and not on Cisco IOS-XR devices
- D. On Cisco IOS and Cisco IOS XE, the packet buffer is stored in DRAM and persists through reloads
- E. On Cisco IOS and Cisco IOS XE, the capture configuration is not stored in NVRAM and does not persist through reloads

Answer: CD

NEW QUESTION 165

Which two sets of configuration implements CBTS?

- A. Create a master tunnel to which other tunnels can be members
- B. Create two bandwidth pools: a global pool and a sub pool
- C. Assign a policy-map defining a CBWFQ on an MPLS TE tunnel
- D. Create a PBR to use multiple MPLS TE tunnels according to the EXP value
- E. Create multiple MPLS TE tunnels from the same headend to the same tail-end

Answer: CE

NEW QUESTION 166

An enterprise customer has recently purchased a WAN link from a service provider. BGP is running over this WAN link. An engineer notices that the CE router uses an large amount of system resources to process routing updates by filtering out unwanted routing updates received from the PE. Which configuration can be applied to reduce the amount of processing required on the CE router that is not accepting full routes from PE?

- A. Enable BGP flowspec between CE and PE to negotiate which BGP prefixes to advertise
- B. Enable BGP prefix-based ORF capability between CE and PE to filter out unwanted routing updates at the source
- C. On CE, place an inbound ACL on the interface-facing PE to filter all unwanted BGP prefixes
- D. On CE, apply an outbound route-map on BGP PE-neighbor to filter all the undesired BGP updates learned from the PE

Answer: B

Explanation:

BGP Prefix-Based Outbound Route Filtering - Cisco

When this capability is enabled, the BGP speaker can install the inbound prefix list filter to the remote peer as an outbound filter, which reduces unwanted routing updates. The BGP Prefix-Based Outbound Route Filtering feature can be configured with send and/or receive ORF capabilities.

NEW QUESTION 167

A router has this error in the syslog message:

```
%BGP-3-INVALID_MPLS:Invalid MPLS label (3) received in update for prefix 3246:1458:217.78.192.85/32 from 194.100.205.2
```

Which issue has it reported?

- A. The BGP label 3 can be used only in a BGP VPNV4 update if the RD is 0:0.
- B. The BGP label 3 can not be used as a label for a VPNV4 prefix.
- C. The BGP label 3 can be used only in a BGP VPNV4 for a directly connected VPNV4 prefix of the sending PE router.
- D. The BGP label 3 can only be used in a BGP VPNV4 update for multicast address-family.

Answer: B

NEW QUESTION 168

Which two restrictions of the Trunk EFP are true? (Choose two.)

- A. Only one trunk EFP can be configured under one port or interface
- B. Features about encapsulations specification are not supported
- C. Features that require VLAN-specific values must be removed from the EFP trunk to form individual EFPs
- D. It supports only static EFPs that are user-configurable
- E. A bridge-domain number that is part of a trunk EFP configuration can be shared only by other EFP if under the same port or interface

Answer: AC

NEW QUESTION 169

In order to validate update messages that contain the BGPsec_Path attribute, the recipient must have access to two pieces of data that are obtained from valid RPKI certificates and ROAs. Which are these two pieces of data? (Choose two.)

- A. the OPEN BGP message that is successfully negotiated between BGP speakers to use the new BGP

- attribute, the BGPsec_Path
- B. the exchanged certificate with Internet Routing Registries using cryptographic identity management systems
 - C. the public key infrastructure with the necessary certificate objects, the digitally signed routing objects, and the distributed repository system to hold
 - D. the AS number, public key, and subject key identifier for each valid RPKI router certificate
 - E. the AS number and the list of IP address prefixes for each valid ROA

Answer: DE

Explanation:

<http://www.cisco.com/c/en/us/about/press/internet-protocol-journal/back-issues/table-contents-52/142-bgp.html>

NEW QUESTION 170

In an Internet scenario with noncongruent unicast and multicast topologies, which protocol provides a scalable policy for performing multicast RPF checks?

- A. MADCAP
- B. MSDP
- C. MBGP
- D. PGM

Answer: C

NEW QUESTION 171

.....

NEW QUESTION 195

Which technology encapsulates customer Ethernet frames with a service provider MAC header?

- A. VPLS
- B. Q-in-Q
- C. MAC-in-MAC
- D. EVPN

Answer: C

NEW QUESTION 196

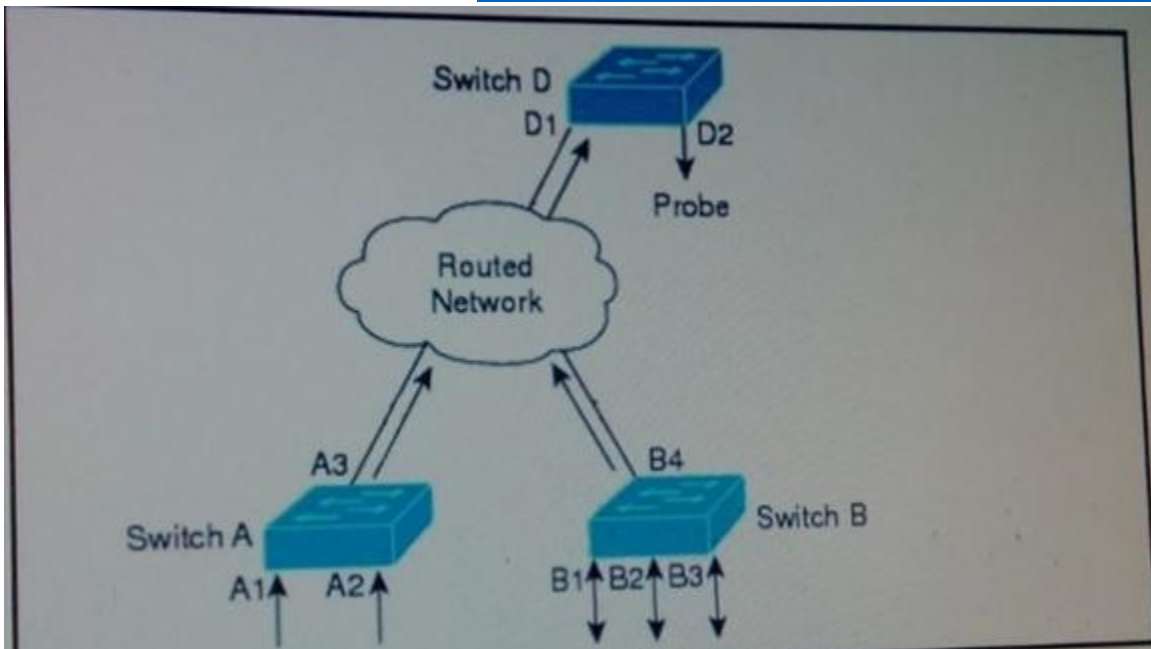
Which version of IGMP is required for source specific multicast implementations?

- A. IGMP version 2
- B. Cisco group management protocol
- C. IGMP version 3
- D. IGMP version 1

Answer: C

NEW QUESTION 197

Refer to the exhibit. The requirements is to copy traffic from switch A and switch B and to send it to a probe connected to switch D across the routed network. Which technology meets this requirement?



- A. NetFlow v5
- B. ERSPAN
- C. NetFlow v9
- D. RSPAN

Answer: B

NEW QUESTION 198

Which mechanism protects the control and management planes of a Cisco IOS device to maintain routing stability, network reachability, and packet delivery?

- A. RTBH
- B. BGP Flow Spec
- C. MQC CLI
- D. CPPr
- E. NetFlow

Answer: D

NEW QUESTION 199

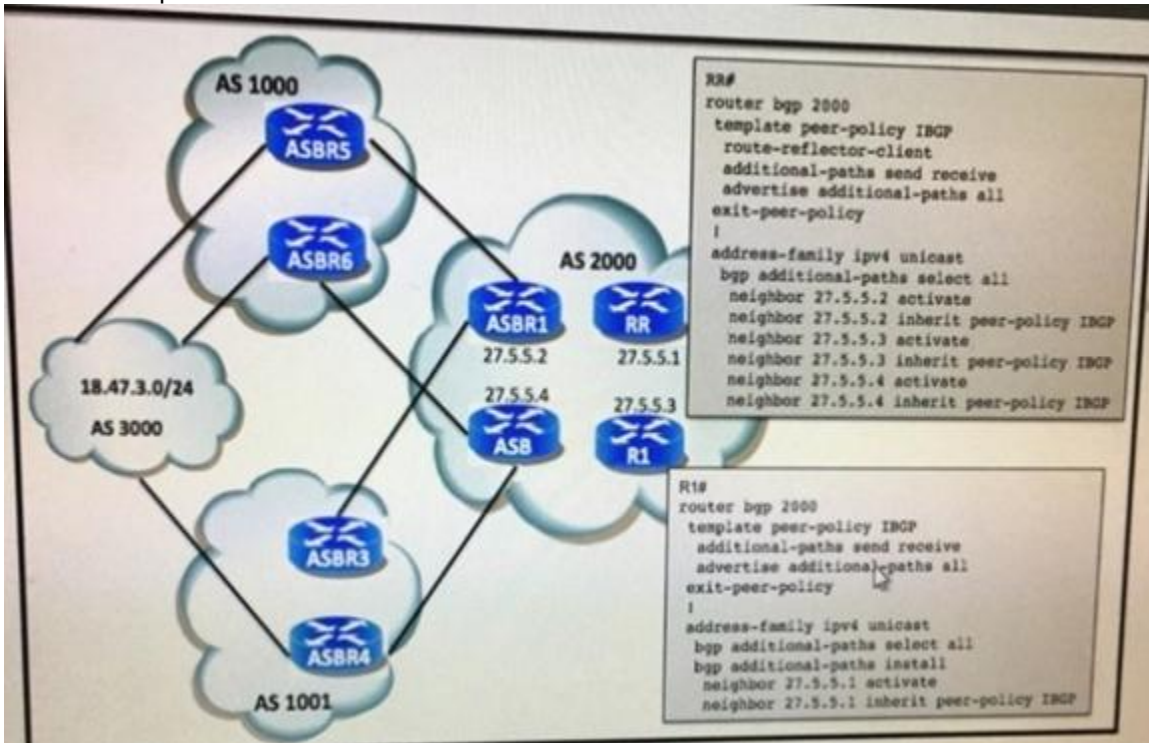
Which Cisco IOS XR feature is used to define route strategies in a modular form that allows common rule sets to be treated and processed independently?

- A. Route maps
- B. Policy maps
- C. BGP templates
- D. RPL policy

Answer: D

NEW QUESTION 200

Refer to the exhibit. AS2000 has deployed the BGP additional path feature. Assuming GP filtering has been deployed in any routers, how many entries does R1 have in the RIB/FFIB table for the 18.47.3.0/24 prefix?



- A. 1
- B. 2
- C. 3
- D. 4

Answer: B

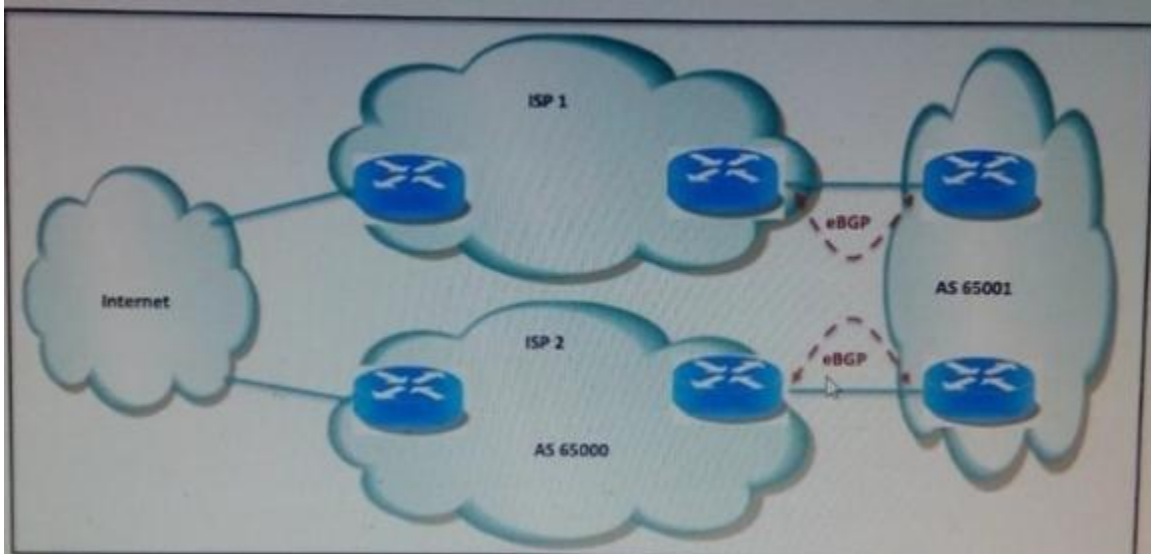
NEW QUESTION 201

Refer to the exhibit. A network engineer from ISP 2 is designing the BGP architecture with a requirement of preventing their customer AS 65001 from becoming a transit AS, using the following configuration.

```

Router BGP 65000
Neighbor 10.0.0.1 remote-as 65001
Neighbor 10.0.0.1 route-map BGP-ROUTE-policy in
  
```

Which Cisco IOS command should be used within the route-map to achieve the goal on ISP 2 from AS 65000?



- A. route-map BGP-ROUTE-POLICY permit 10
set community no-advertise additive
- B. ip as-path access-lists 1 permit^65001\$
!
route-map BGP-ROUTE-POLICY deny 10
match as-path 1
!
route-map BGP-ROUTE-POLICY permit 10
- C. ip as-path access-list 1 permit^65001\$
!
route-map BGP-ROUTE-POLICY permit 10
match as-path 1
- D. route-map BGP-ROUTE-POLICY permit 10
set community no-export additive

Answer: C

NEW QUESTION 202

In a multihop BFD scenario, which two options create a multihop template and associate it with maps of destinations and associated timers? (Choose two.)

- A. Fallover BFD
- B. BFD echo
- C. BFD map
- D. BFD template
- E. BFD version 2

Answer: CD

NEW QUESTION 203

Which description of the main purpose of the LDP targeted Session is true?

- A. To improve the label convergence time for directly connected LSRs by maintaining the session up when the link between LSRs by maintaining the session up when the link between LSRs down.

- B. To prevent traffic from being black-holed by building a MPLS forwarding table depending on the IP routing protocol in use.
- C. To establish an adjacency before exchanging network information to avoid keepalive messages being dropped during heavy network traffic event.
- D. To provide the means for LSR to request and release label prefix binding information to peers routers.

Answer: A

NEW QUESTION 204

A regional operation center deployed SQL servers that were synchronized with the company's backend storage servers by using a 768 Kbps link. Although network congestion is not a frequent issue, the VoIP service suffers a serious degradation. Which two technologies can be implemented to improve the quality of the customer's VoIP traffic? (Choose two.)

- A. A decrease in the wan interface buffer size
- B. LLQ for management traffic
- C. cRTP
- D. TCP/UDP filtering based on NBAR
- E. TCP traffic prioritization
- F. LFI
- G. TCP starvation

Answer: CF

NEW QUESTION 205

A customer has a requirements record voice calls for IPT connected on switch A using VLAN 200. Record traffic should be forwarded to the IPCC recording server, which is connected on switch B, voice recording is not working. Assuming that RSPAN source monitoring is properly set, which action fixes this problem?

- A. On switch B, the monitor session 1 destination remote <interface_config_to_recording_server> command must be applied
- B. On switch B, the port connects to the recording server must have an IP address and be accessible via VLAN 200
- C. On switch B, the port that connects to the recording server must be accessed on VLAN
- D. On switch A and switch B, the remote-span command must be configured on the mirroring dedicated VLAN

Answer: D

NEW QUESTION 206

Which type of mVPN core tree does the Rosen mLDP profile use to signal individual P2MP LSP that are mapped to SGs?

- A. S-PMSI
- B. MS-PMSI
- C. partitioned MDT
- D. MI-PMSI

Answer: D

NEW QUESTION 207

A backbone carrier is approached by an ISP_A which provides L3VPN services. The ISP_A requires MPLS VPN services from the backbone carrier to establish connectivity between the two

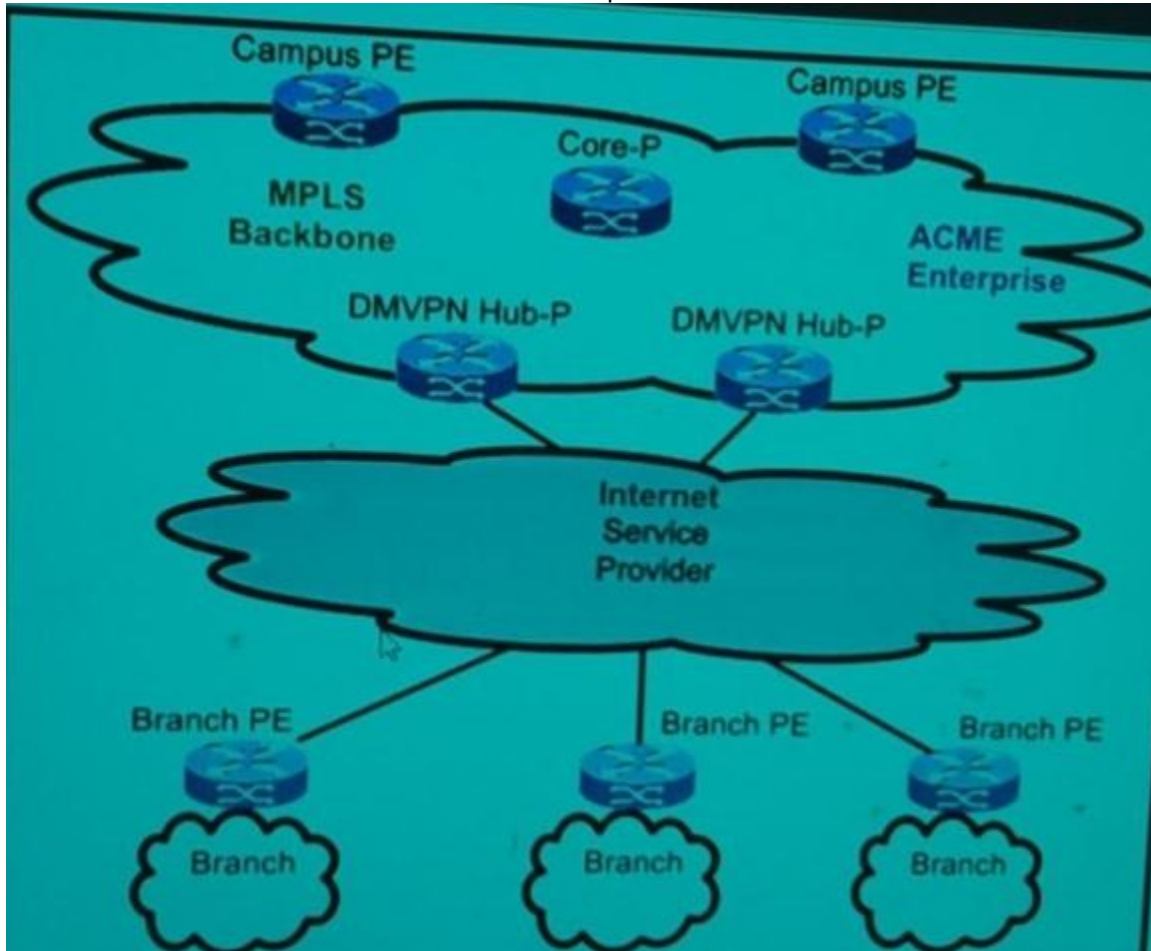
POPs of the ISP_A Which label protocol should the backbone carrier use to provide the proper connectivity that the ISP_A requires?

- A. L2TPv3
- B. L2TPv2
- C. LDP
- D. GRE
- E. mGRE
- F. BGP

Answer: C

NEW QUESTION 208

Refer to the exhibit. ACME Enterprise is running DMVPN with spoke-to-spoke communication. DMVPN has been implemented to extend MPLS to all other branches. What is the traffic flow behavior between branches after DMVPN implementation?



- A. Traffic flows through the DMVPN hub
- B. Traffic flows directly between branches only if the DMVPN configuration is changed to hub-and-spoke communication
- C. Traffic flows directly between branches through service provider cloud, bypassing the DMVPN hub
- D. Traffic flow does not occur between branches

Answer: A

NEW QUESTION 209

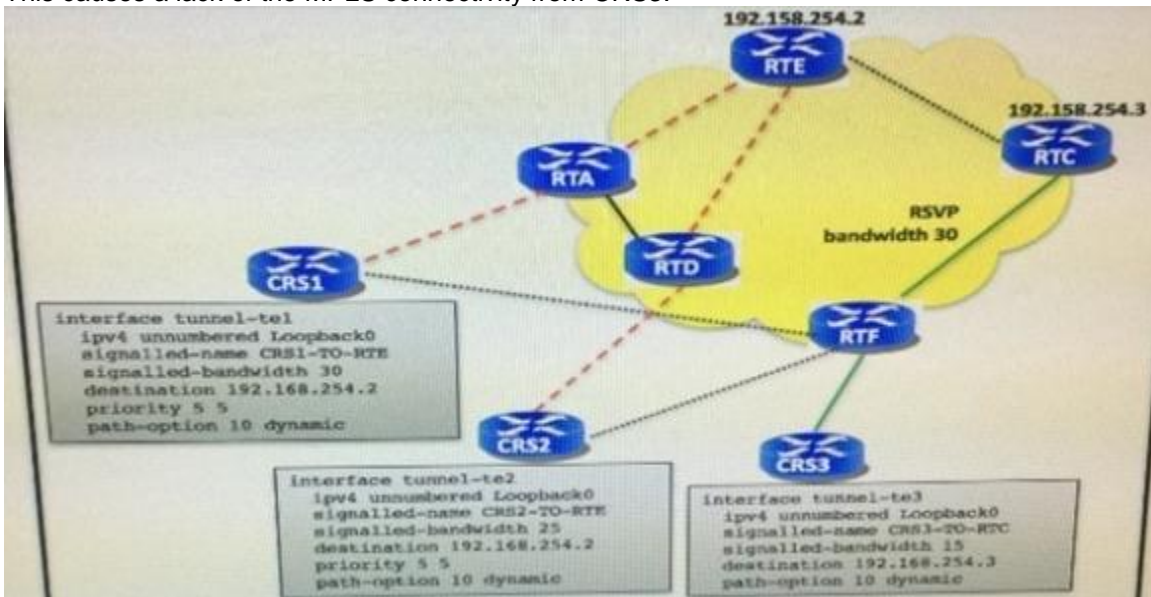
A service provider has a requirements to deploy a virtual router in its network to handle high-performance data plane service up to 20Gbps. Which Cisco solution fulfills this requirement?

- A. Cisco 7600
- B. Cisco ASR 9000
- C. Cisco NCS 6000
- D. Cisco CSR 1000v
- E. Cisco nexus 9000v

Answer: B

NEW QUESTION 210

Refer to the exhibit. The red dashed lines represent the preferred paths for the MPLS TE tunnel 1 and MPLS TE tunnel 2 to reach RTE3. The black dotted lines are the less desirable path. In case RTA or RTD fails, the MPLS TE tunnel 1 and MPLS TE tunnel 2 preempt the MPLS TE tunnel 3. This causes a lack of the MPLS connectivity from CRS3.



Which solution avoids the MPLS TE tunnel 3 to be teardown by the MPLS TE tunnel 1 and MPLS TE tunnel 2?

- A. change the MPLS TE tunnel 3 priority values to 6 4
- B. lower the signaled-bandwidth value of the MPLS TE tunnel 3
- C. use the exclude option on the explicit path configuration for the MPLS TE tunnel 1 and MPLS TE tunnel 2
- D. change the MPLS TE tunnel 3 priority values to 4 6
- E. use affinity and link coloring in all MPLS TE tunnels and MPLS TE link resources

Answer: A

NEW QUESTION 211

Which option is the benefit of per-link LFA over per-prefix LFA?

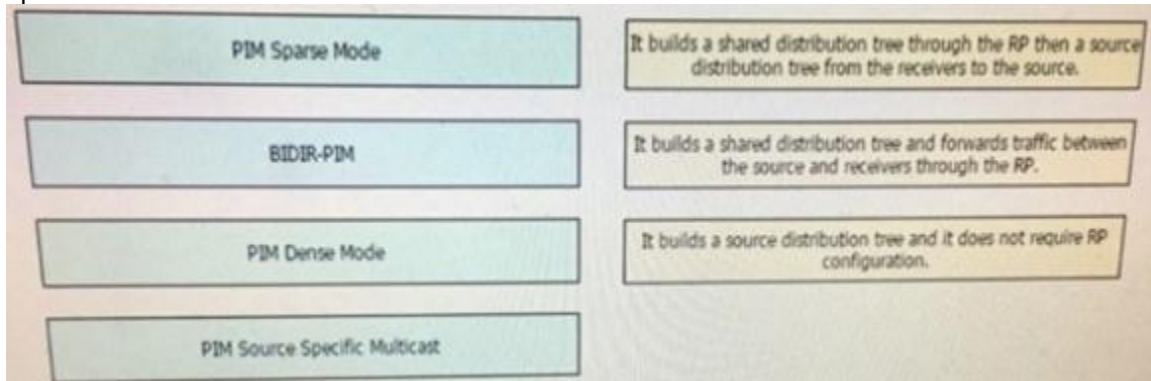
- A. It has a greater applicability
- B. It provides greater protection coverage
- C. It is simpler
- D. It enables better bandwidth utilization

Answer: C

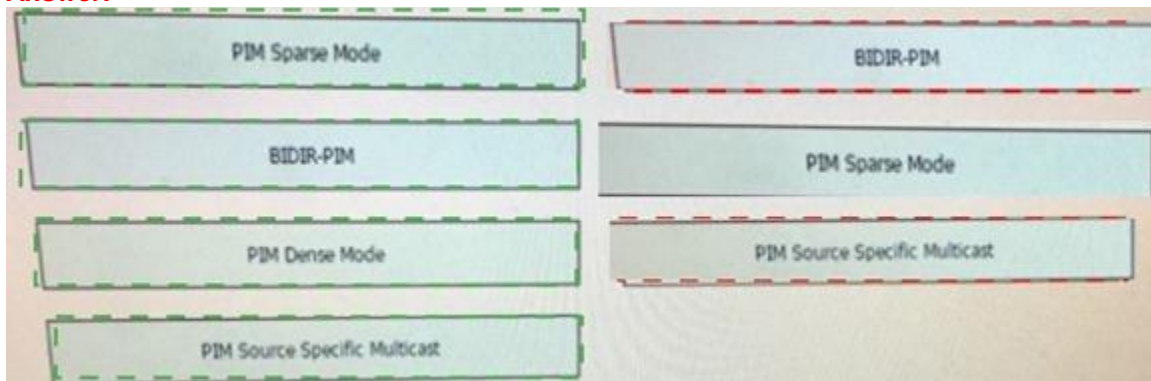
NEW QUESTION 212

Drag and Drop Question

Drag and drop PIM mode from the left onto the corresponding characteristic on the right. Not all options are used.



Answer:



NEW QUESTION 213

A service provider network engineer is defining a Qos architecture with the following requirements :

- The service provider does not provide managed CPE services.
- Customer throughput of both connection-oriented and non-connection-oriented must be managed.
- The service provider network capacity must be protected by limiting customer traffic to the purchased circuit bandwidth.
- Latency-sensitive traffic must be accommodated.

Which recommendation is the network engineer defining?

- A. The service provider must shape traffic that is outbound on the PE interface
- B. The service provider must shape traffic that is inbound on the PE interface
- C. The Customer must shape all traffic that is outbound on the CE interface
- D. The service provider must police traffic that is inbound on the PE interface
- E. The service provider must police traffic that is outbound on the PE interface

F. The customer must police all traffic that is outbound on the CE interface

Answer: D

NEW QUESTION 214

What is the routing paradigm in a segment routing-enabled network?

- A. Destination-based routing
- B. Source, destination and layer 4 port routing paradiagram
- C. Source-based and destination-based routing
- D. Source-based routing

Answer: D

NEW QUESTION 215

Which three IP/MPLS feature have been removed form MPLS-TP? (Choose three.)

- A. Global and local label
- B. Dual-direction LSP
- C. LSP merging
- D. ECMP
- E. QoS mapping
- F. Protection
- G. PHP

Answer: CDG

NEW QUESTION 216

SNMPv3 provides which three security features? (Choose three.)

- A. DES 56-bit encryption
- B. Encrypted user password
- C. Private community information that is exchanged out-of-band
- D. Device hostname that is authenticated via AES algorithm
- E. Message integrity
- F. Authentication that is based on MD5 or SHA algorithms

Answer: AEF

NEW QUESTION 217

In a Service provider network , a NOC engineer identifies and interface that flaps continuously. This interface connects to an EBGP peer. Which feature can reduce this instability on the service provider network?

- A. BGP PIC
- B. IP event Dampening
- C. IGP Prefix Prioritization
- D. Non-stop Forwarding

Answer: B

NEW QUESTION 218

Which operational metric to measure the health of the incident management process is critical?

- A. A number of successful changes
- B. Number of incidents per severity level
- C. Mean time to restore service
- D. Mean time to resolve incidents

Answer: A

NEW QUESTION 219

Which three components are required to support ISSU? (Choose three.)

- A. Supported line cards.
- B. SSO and NSF working.
- C. Redundant router for failover.
- D. Images that are preloaded into the file system.
- E. Traffic that is moved to another device.
- F. Active and standby RPs.

Answer: ABF

NEW QUESTION 220

Which are two benefits of using segment routing over RSVP-TE for traffic engineering? (Choose two.)

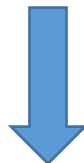
- A. Segment routing traffic engineering tunnels always follow the low-latency path
- B. ECMP-aware traffic engineering is natively supported by segment routing
- C. Per-flow state is present only at the ingress node to the Segment routing-enabled network
- D. Per-flow state is present at the ingress and egress node to the segment routing-enabled network
- E. Per-flow state is maintained on all nodes of the segment routing-enabled network

Answer: BC

NEW QUESTION 221

.....

Get Complete Version Exam 400-201 Dumps with VCE and PDF Here



<https://www.passleader.com/400-201.html>